

Black Hawk County, Iowa**12/01/2020**

Units: US Survey Feet

Point ID: **7053**Stamping on Disk: **94-053**

Type of Monument: *Berntsen 5/8" fluted "Top Security" rod, 6ft long with 2.5" dia. aluminum survey cap, NGS style access cover.*

Physical Details: *Station is flush with ground surface at centerline of cemetery drive.*

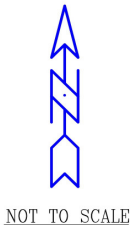
NAD 83(NA2011) Latitude: **N42°20'32.41260"** Longitude: **W92°14'24.73210"**
NAVD 88 Ortho Height: **853.860sft** Ellip. Ht: **751.730sft** **Geoid18(Conus)**

Horizontal Datum: NAD 83(NA2011) - Vertical Datum: NAVD 1988

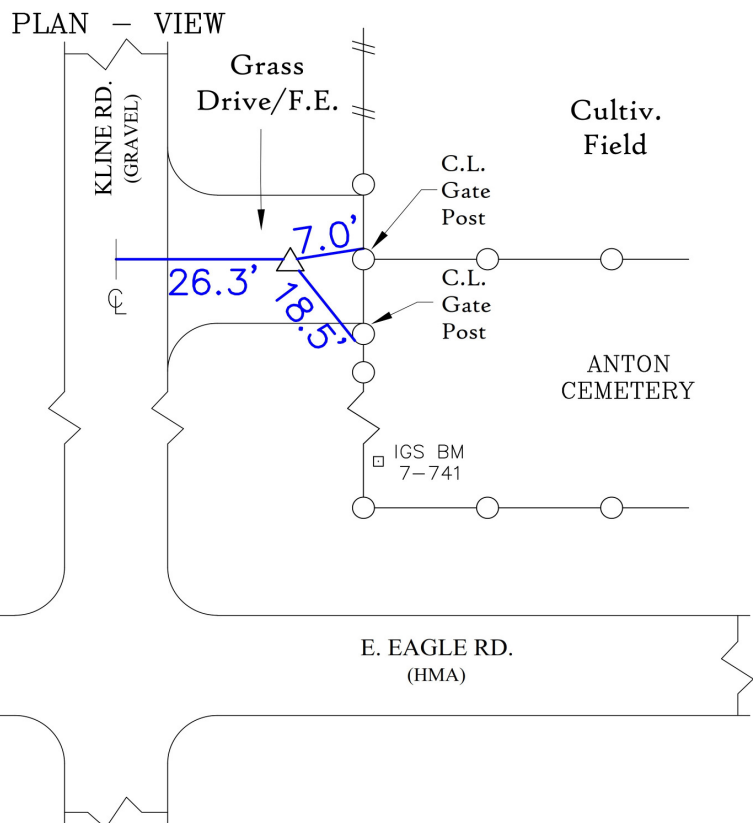
Iowa North Zone (1401) Northing: **3590336.980sft** Easting: **5261820.034sft**
Mapping Angle: **0°51'14"** Combination Scale Factor: **0.9999254660**

Iowa Regional Coordinate System, Zone 5, Waterloo LCC

IaRCS Zone 5 Northing: **8787869.859sft** Easting: **15502648.720sft**
Mapping Angle: **0°00'24"** Combination Scale Factor: **1.0000104057**

MONUMENT TIES:

* Red Carsonite Marker
Located Along Fence Line
7' E. of Station.



BH Co. Updated TIES: C.W. & G.T. Dec. 14, 2006
TIE SOURCE: PRIOR REF. A.S.I. INC., CEDAR FALLS, IA.
FORM PREPARED BY: A.A. & G.T. February 15, 2008

This document was prepared by Dan Corbin, Inc. for Black Hawk County, Iowa.

7053



Facing Southeast

