

# Black Hawk County, Iowa

Units: US Survey Feet

12/01/2020

Point ID: **7052**

Stamping on Disk: **94-052**

Type of Monument: *Berntsen 5/8" fluted "Top Security" rod, 6ft long with 2.5" dia. aluminum survey cap, NGS style access cover.*

Physical Details: *Station is flush with ground surface at ditch bottom, 2' +/- from toe of B.S.*

NAD 83(NA2011) Latitude: **N42°17'44.25882"** Longitude: **W92°13'13.00825"**  
NAVD 88 Ortho Height: **841.828sft** Ellip. Ht: **739.709sft** **Geoid18(Conus)**

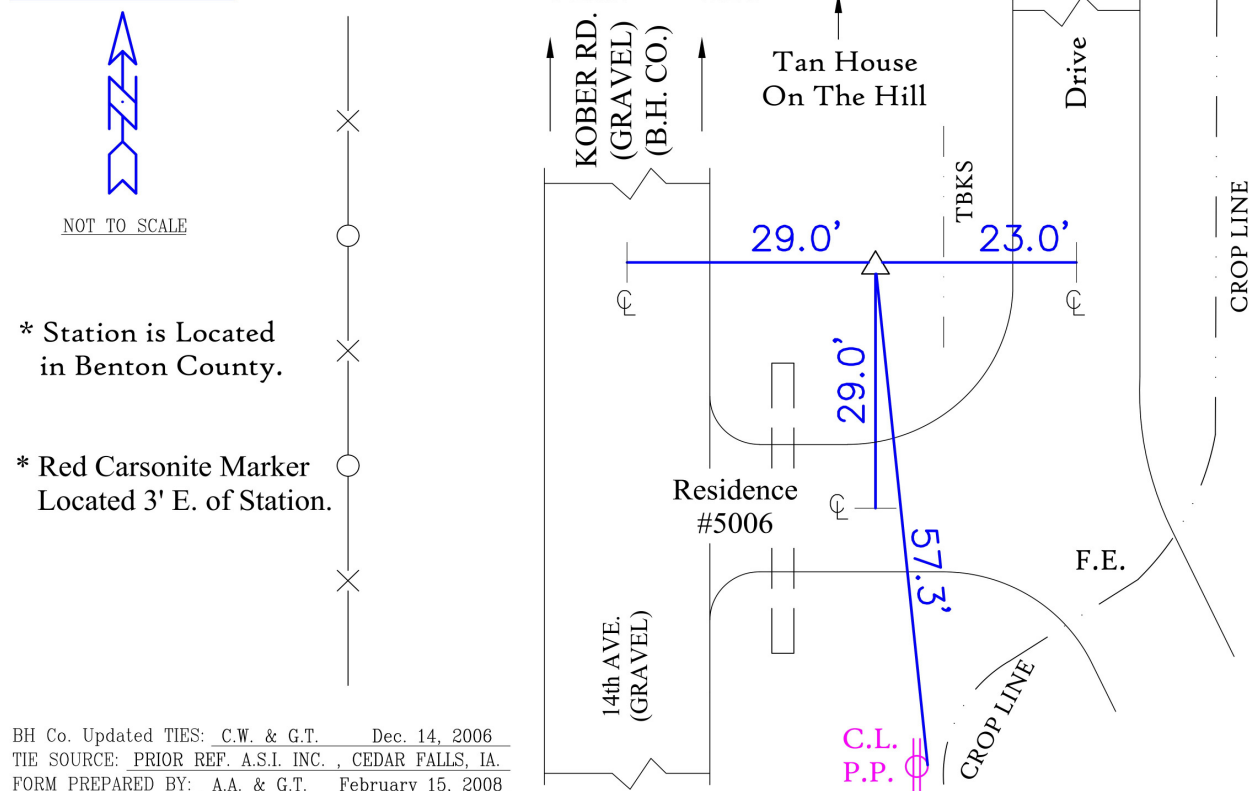
Horizontal Datum: NAD 83(NA2011) - Vertical Datum: NAVD 1988

**Iowa North Zone (1401)** Northing: **3573397.990sft** Easting: **5267463.295sft**  
Mapping Angle: **0°52'02"** Combination Scale Factor: **0.9999309690**

Iowa Regional Coordinate System, Zone 5, Waterloo LCC

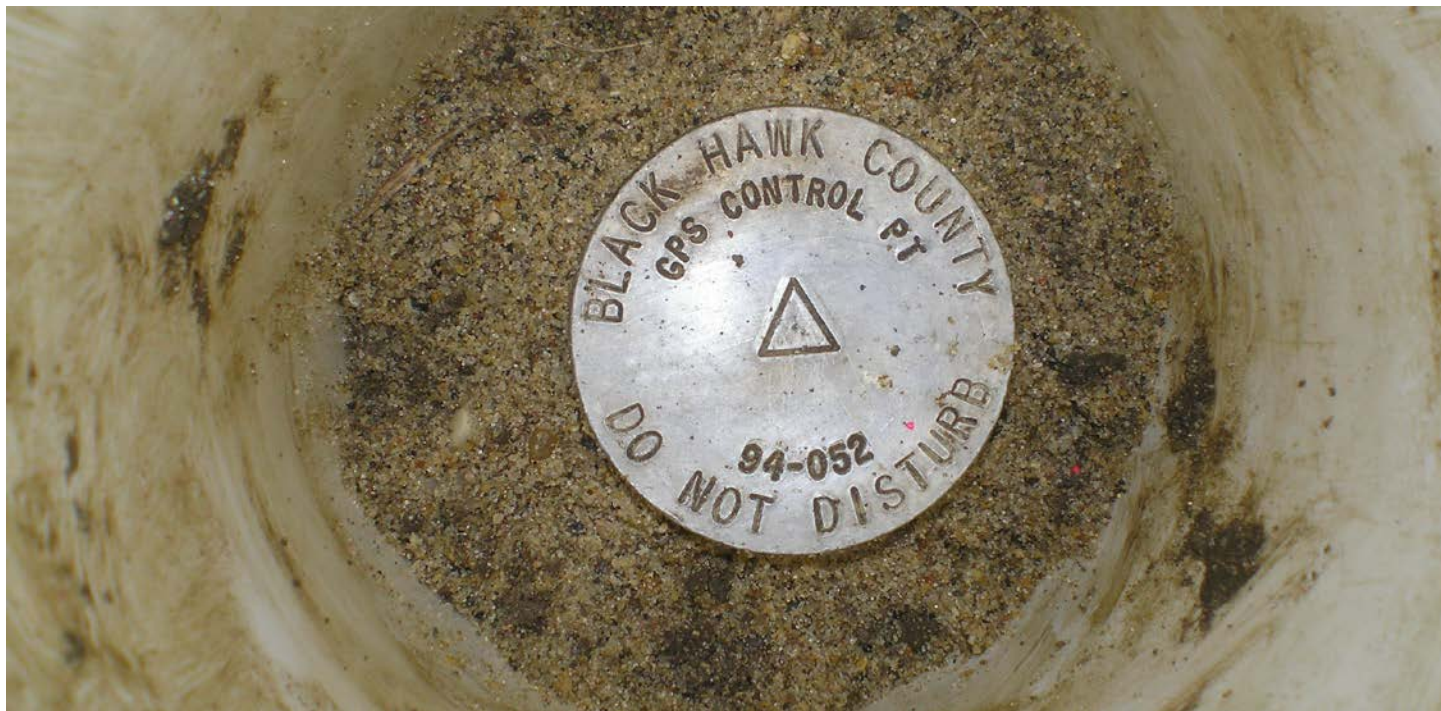
**IaRCS Zone 5** Northing: **8770847.838sft** Easting: **15508041.368sft**  
Mapping Angle: **0°01'12"** Combination Scale Factor: **1.0000156604**

## MONUMENT TIES:



*This document was prepared by Dan Corbin, Inc. for Black Hawk County, Iowa.*

7052



Facing Southeast

