

**Black Hawk County, Iowa**

Units: US Survey Feet

12/01/2020

Point ID: **7051**Stamping on Disk: **94-051**

Type of Monument: *Berntsen 5/8" fluted "Top Security" rod, 6ft long with 2.5" dia. aluminum survey cap, NGS style access cover.*

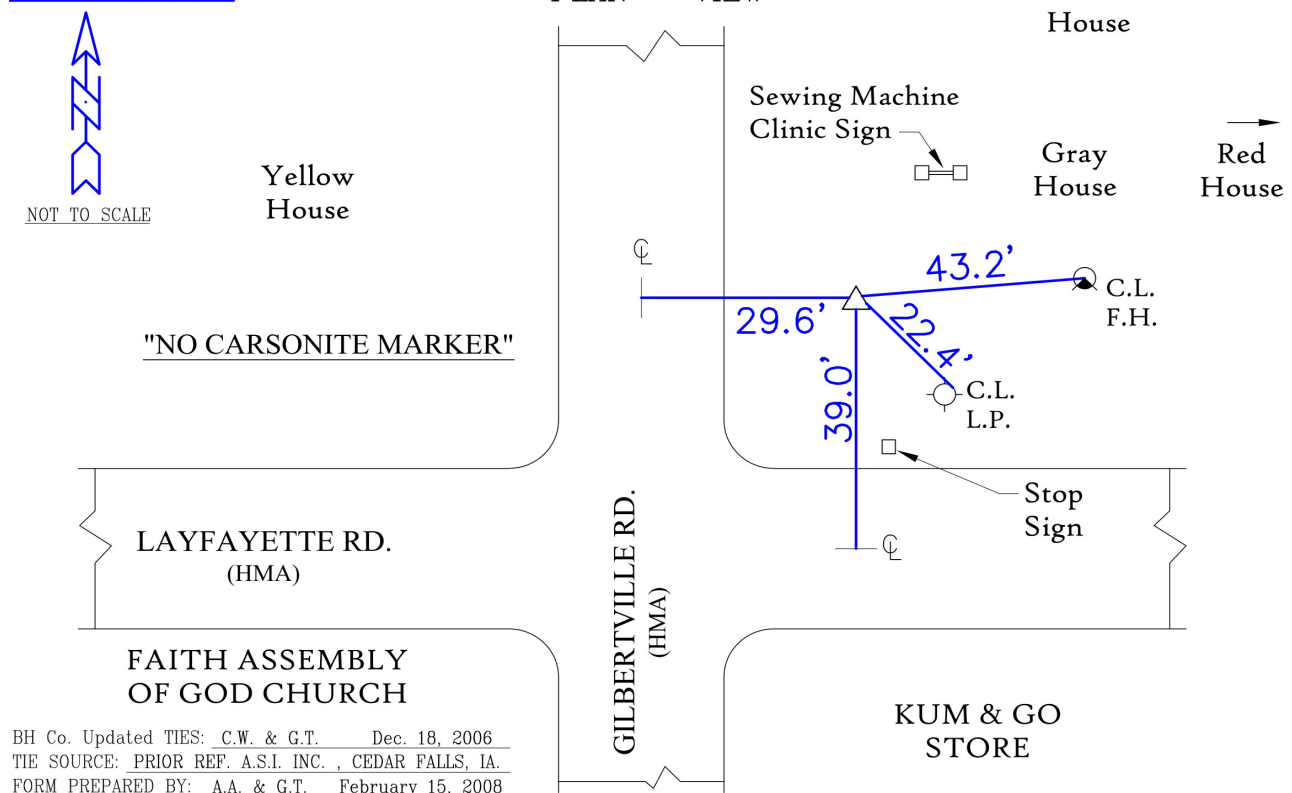
Physical Details: *Station is flush with ground surface located in mowed lawn at northeast corner of intersection.*

NAD 83(NA2011) Latitude: **N42°28'09.00777"** Longitude: **W92°15'29.87003"**  
NAVD 88 Ortho Height: **869.960sft** Ellip. Ht: **767.889sft** **Geoid18(Conus)**

Horizontal Datum: NAD 83(NA2011) - Vertical Datum: NAVD 1988

**Iowa North Zone (1401)** Northing: **3636480.089sft** Easting: **5256250.081sft**Mapping Angle: **0°50'30"**Combination Scale Factor: **0.9999146352**

Iowa Regional Coordinate System, Zone 5, Waterloo LCC

**IaRCS Zone 5** Northing: **8834094.221sft** Easting: **15497761.211sft**Mapping Angle: **-0°00'20"**Combination Scale Factor: **1.0000002505****MONUMENT TIES:**

*This document was prepared by Dan Corbin, Inc. for Black Hawk County, Iowa.*

7051



Facing Southeast

