

Black Hawk County, Iowa

Units: US Survey Feet

12/01/2020

Point ID: **7048**Stamping on Disk: **94-048**

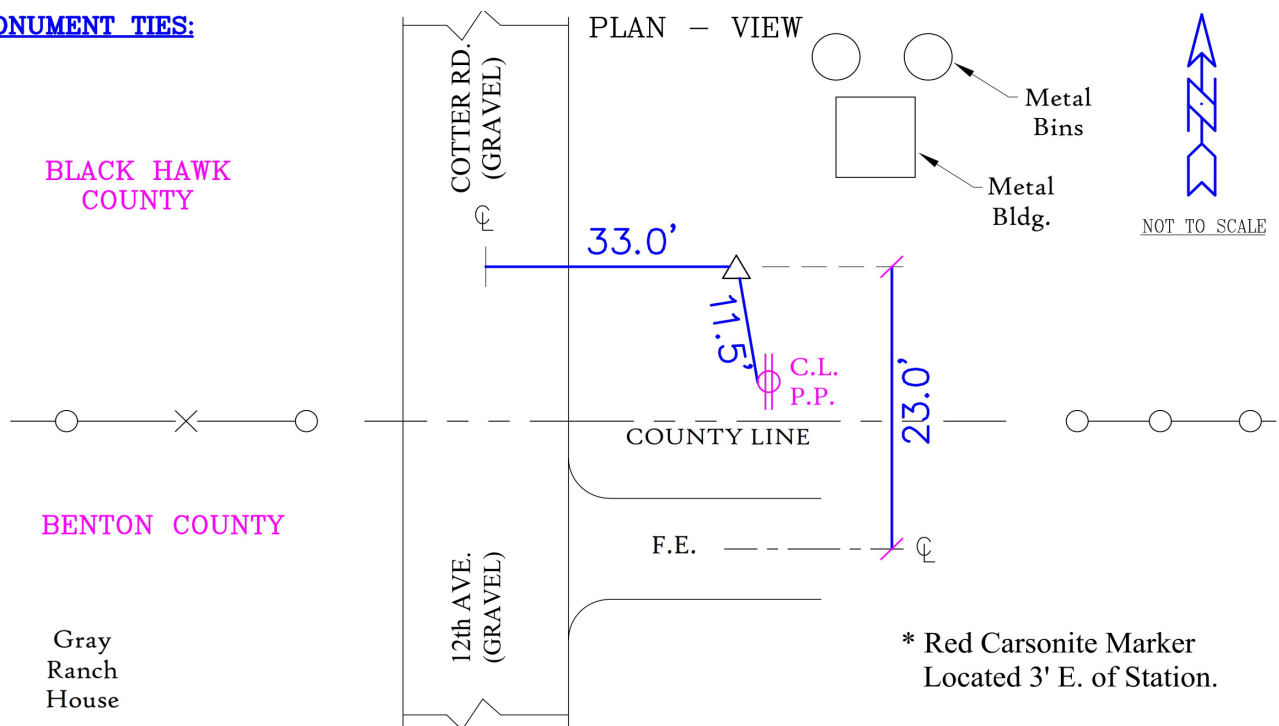
Type of Monument: *Berntsen 5/8" fluted "Top Security" rod, 6ft long with 2.5" dia. aluminum survey cap, NGS style access cover.*

Physical Details: *Station is flush with ground surface located at TBKS.*

NAD 83(NA2011) Latitude: **N42°17'51.16271"** Longitude: **W92°15'33.78646"**
NAVD 88 Ortho Height: **882.130sft** Ellip. Ht: **779.811sft** **Geoid18(Conus)**

Horizontal Datum: NAD 83(NA2011) - Vertical Datum: NAVD 1988
Iowa North Zone (1401) Northing: **3573939.079sft** Easting: **5256874.394sft**
Mapping Angle: **0°50'27"** Combination Scale Factor: **0.9999288369**

Iowa Regional Coordinate System, Zone 5, Waterloo LCC
IaRCS Zone 5 Northing: **8771545.490sft** Easting: **15497460.729sft**
Mapping Angle: **-0°00'23"** Combination Scale Factor: **1.0000135383**

MONUMENT TIES:

BH Co. Updated TIES: C.W. & G.T. Dec. 16, 2006
TIE SOURCE: PRIOR REF. A.S.I. INC., CEDAR FALLS, IA.
FORM PREPARED BY: A.A. & G.T. February 15, 2008

This document was prepared by Dan Corbin, Inc. for Black Hawk County, Iowa.

7048



Facing East

