

Black Hawk County, Iowa

Units: US Survey Feet

12/01/2020

Point ID: **7047**Stamping on Disk: **94-047**

Type of Monument: *Berntsen 5/8" fluted "Top Security" rod, 6ft long with 2.5" dia. aluminum survey cap, NGS style access cover.*

Physical Details: *Station is flush with ground surface located in mowed grass between sidewalk and back of curb. Sta is 26' north of C.L. of Central Ave.*

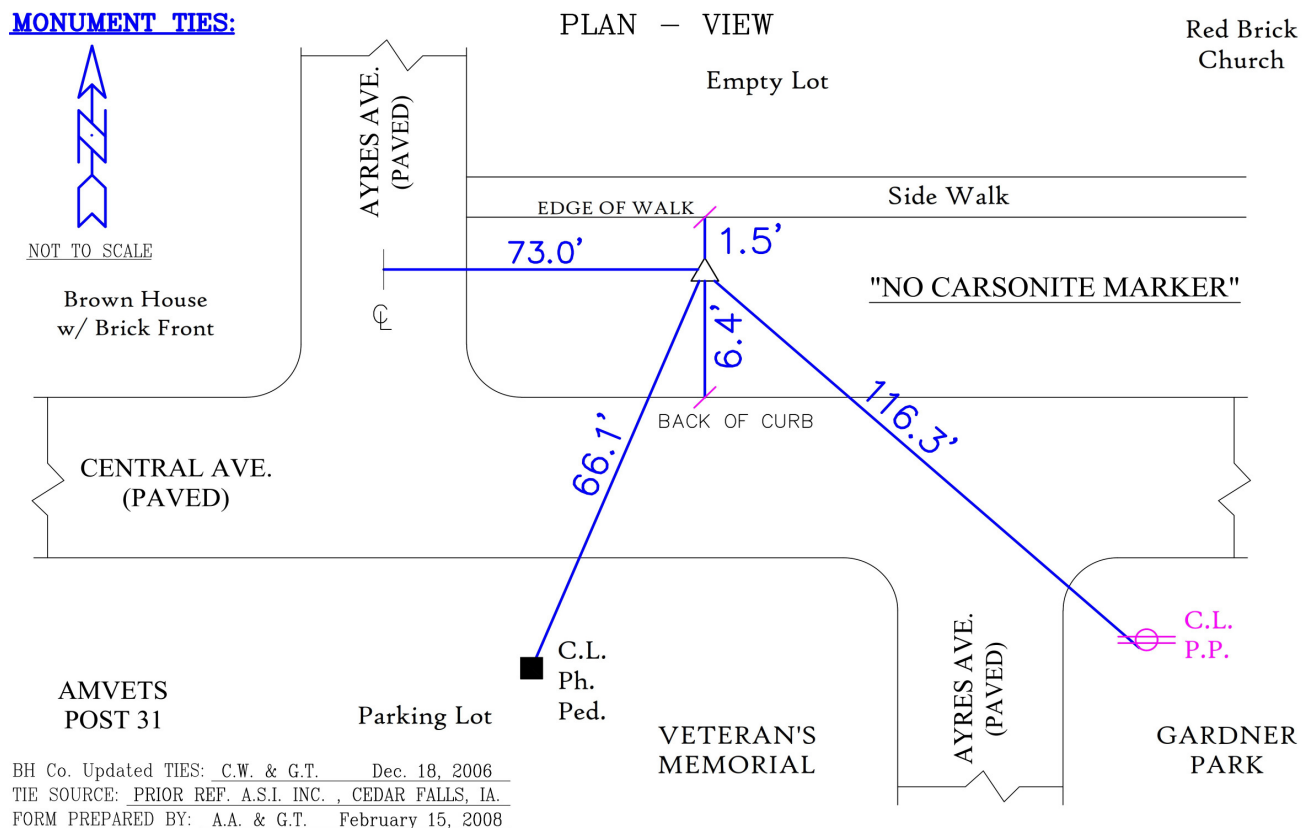
NAD 83(NA2011) Latitude: **N42°28'09.14501"** Longitude: **W92°17'28.22560"**
NAVD 88 Ortho Height: **832.672sft** Ellip. Ht: **730.454sft** **Geoid18(Conus)**

Horizontal Datum: NAD 83(NA2011) - Vertical Datum: NAVD 1988

Iowa North Zone (1401) Northing: **3636365.426sft** Easting: **5247380.702sft**
Mapping Angle: **0°49'09"** Combination Scale Factor: **0.9999164222**

Iowa Regional Coordinate System, Zone 5, Waterloo LCC

IaRCS Zone 5 Northing: **8834110.709sft** Easting: **15488890.347sft**
Mapping Angle: **-0°01'40"** Combination Scale Factor: **1.0000020378**

MONUMENT TIES:

This document was prepared by Dan Corbin, Inc. for Black Hawk County, Iowa.

7047



Facing Southeast

