

Black Hawk County, Iowa

Units: US Survey Feet

12/01/2020

Point ID: **7046**Stamping on Disk: **94-046**

Type of Monument: *Berntsen 5/8" fluted "Top Security" rod, 6ft long with 2.5" dia. aluminum survey cap, NGS style access cover.*

Physical Details: *Station is flush with ground surface, located in mowed lawn B.S.*

NAD 83(NA2011) Latitude: **N42°25'43.26054"** Longitude: **W92°17'46.83323"**
NAVD 88 Ortho Height: **913.224sft** Ellip. Ht: **810.991sft** Geoid18(Conus)

Horizontal Datum: NAD 83(NA2011) - Vertical Datum: NAVD 1988

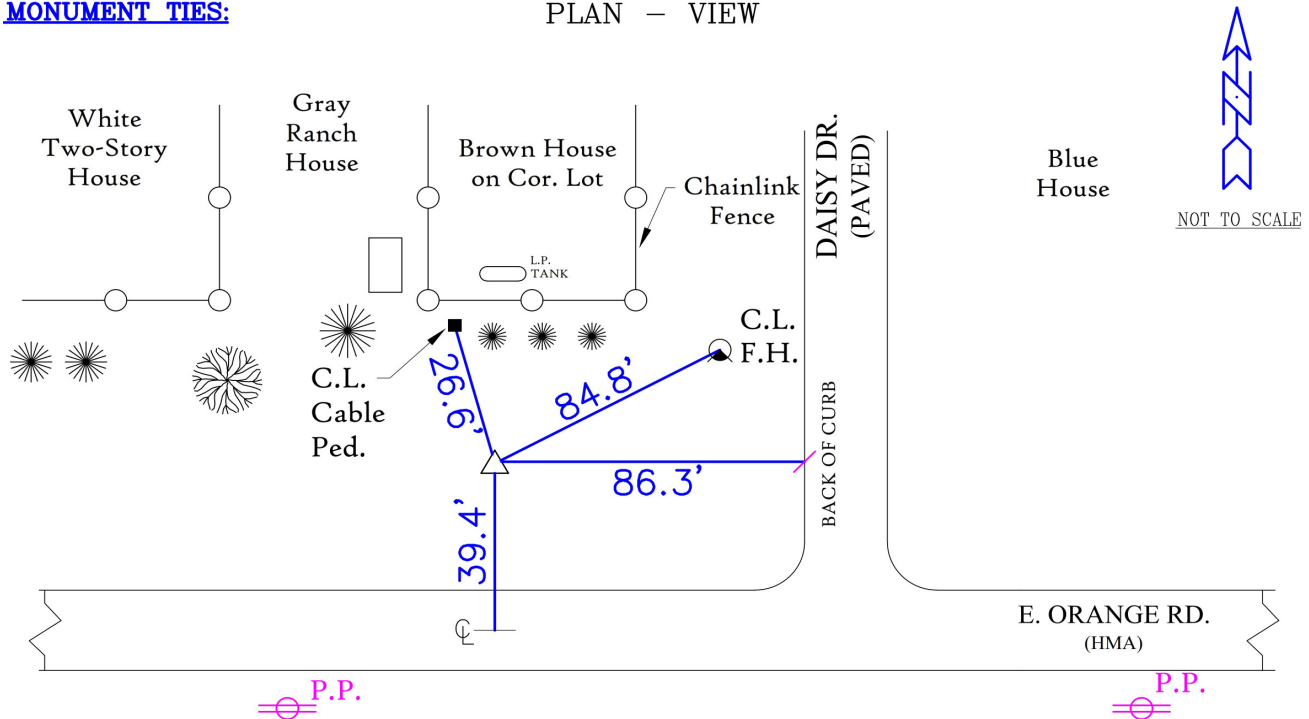
Iowa North Zone (1401) Northing: **3621579.290sft** Easting: **5246196.558sft**
Mapping Angle: **0°48'57"** Combination Scale Factor: **0.9999152574**

Iowa Regional Coordinate System, Zone 5, Waterloo LCC

IaRCS Zone 5 Northing: **8819342.435sft** Easting: **15487487.594sft**
Mapping Angle: **-0°01'53"** Combination Scale Factor: **1.0000006567**

MONUMENT TIES:

PLAN - VIEW



BH Co. Updated TIES: C.W. & G.T. Dec. 14, 2006
TIE SOURCE: PRIOR REF. A.S.I. INC., CEDAR FALLS, IA.
FORM PREPARED BY: A.A. & G.T. February 15, 2008

"NO CARSONITE MARKER"

This document was prepared by Dan Corbin, Inc. for Black Hawk County, Iowa.

7046



Facing North

