

Black Hawk County, Iowa

Units: US Survey Feet

12/01/2020Point ID: **7045**Stamping on Disk: **94-045**

Type of Monument: *Berntsen 5/8" fluted "Top Security" rod, 6ft long with 2.5" dia. aluminum survey cap, NGS style access cover.*

Physical Details: *Station is flush with ground surface at centerline of ditch +/-.*

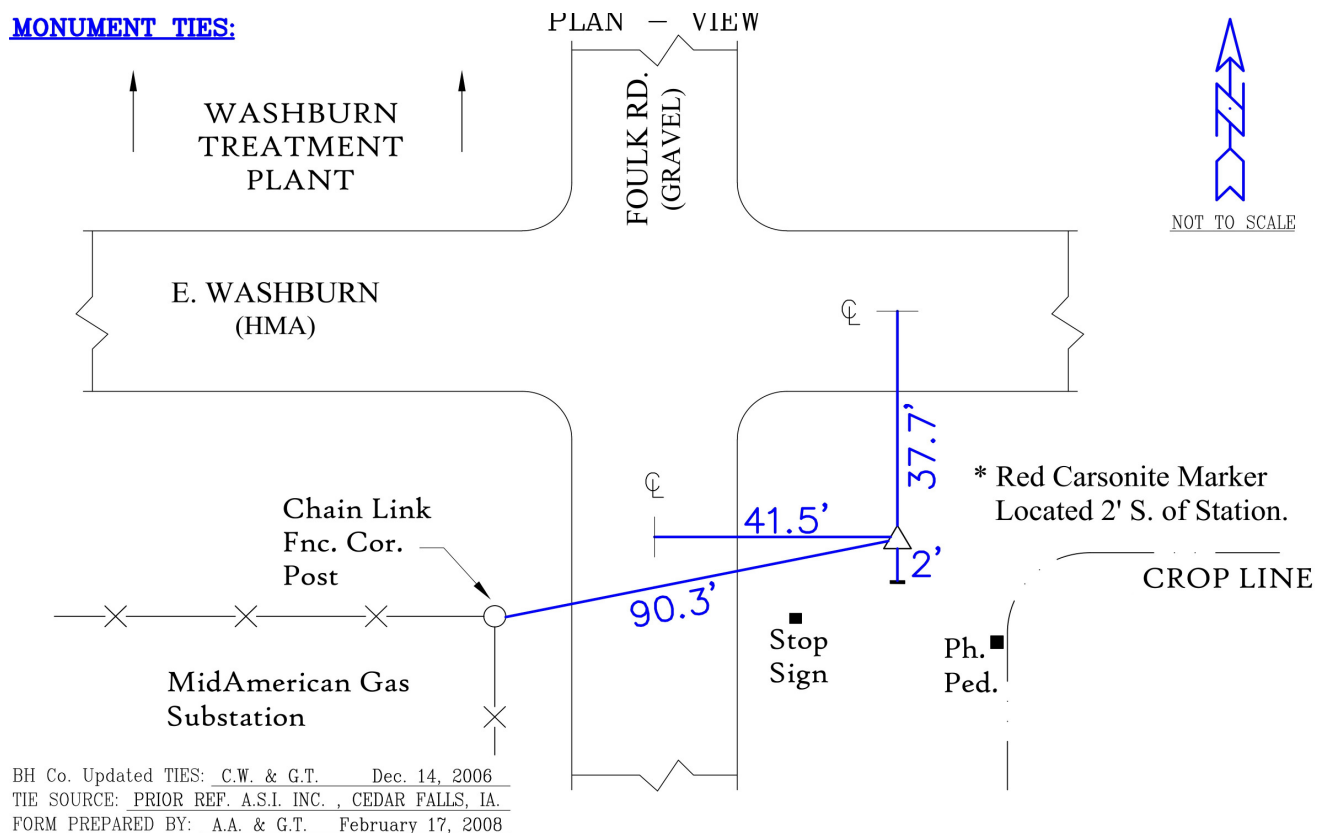
NAD 83(NA2011) Latitude: **N42°24'49.41944"** Longitude: **W92°16'44.13064"**
NAVD 88 Ortho Height: **844.686sft** Ellip. Ht: **742.505sft** Geoid18(Conus)

Horizontal Datum: NAD 83(NA2011) - Vertical Datum: NAVD 1988

Iowa North Zone (1401) Northing: **3616197.028sft** Easting: **5250977.056sft**
Mapping Angle: **0°49'39"** Combination Scale Factor: **0.9999196471**

Iowa Regional Coordinate System, Zone 5, Waterloo LCC

IaRCS Zone 5 Northing: **8813889.614sft** Easting: **15492188.391sft**
Mapping Angle: **-0°01'11"** Combination Scale Factor: **1.0000049669**

MONUMENT TIES:

This document was prepared by Dan Corbin, Inc. for Black Hawk County, Iowa.

7045



Facing South

