

Black Hawk County, Iowa

Units: US Survey Feet

12/01/2020

Point ID: **7042**Stamping on Disk: **94-042**

Type of Monument: *Berntsen 5/8" fluted "Top Security" rod, 6ft long with 2.5" dia. aluminum survey cap, NGS style access cover.*

Physical Details: *Station is flush with ground surface located on south edge of field ent.*

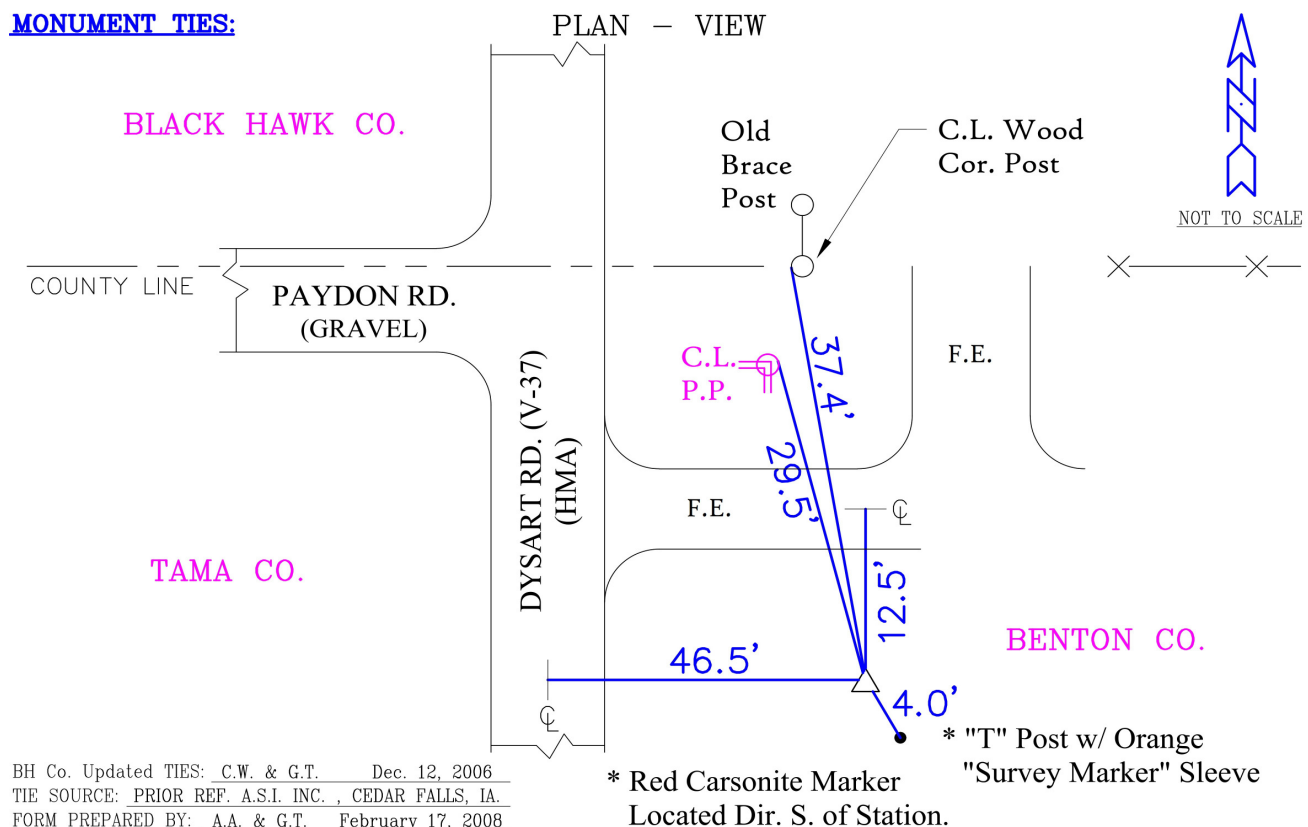
NAD 83(NA2011) Latitude: **N42°17'50.71825"** Longitude: **W92°17'55.01960"**
NAVD 88 Ortho Height: **982.720sft** Ellip. Ht: **880.208sft** **Geoid18(Conus)**

Horizontal Datum: NAD 83(NA2011) - Vertical Datum: NAVD 1988

Iowa North Zone (1401) Northing: **3573740.803sft** Easting: **5246262.454sft**
Mapping Angle: **0°48'51"** Combination Scale Factor: **0.9999240519**

Iowa Regional Coordinate System, Zone 5, Waterloo LCC

IaRCS Zone 5 Northing: **8771504.134sft** Easting: **15486846.118sft**
Mapping Angle: **-0°01'59"** Combination Scale Factor: **1.0000087522**

MONUMENT TIES:

This document was prepared by Dan Corbin, Inc. for Black Hawk County, Iowa.

7042



Facing South

