

**Black Hawk County, Iowa**

Units: US Survey Feet

12/01/2020

Point ID: **7040**Stamping on Disk: **94-040**

Type of Monument: *Berntsen 5/8" fluted "Top Security" rod, 6ft long with 2.5" dia. aluminum survey cap, NGS style access cover.*

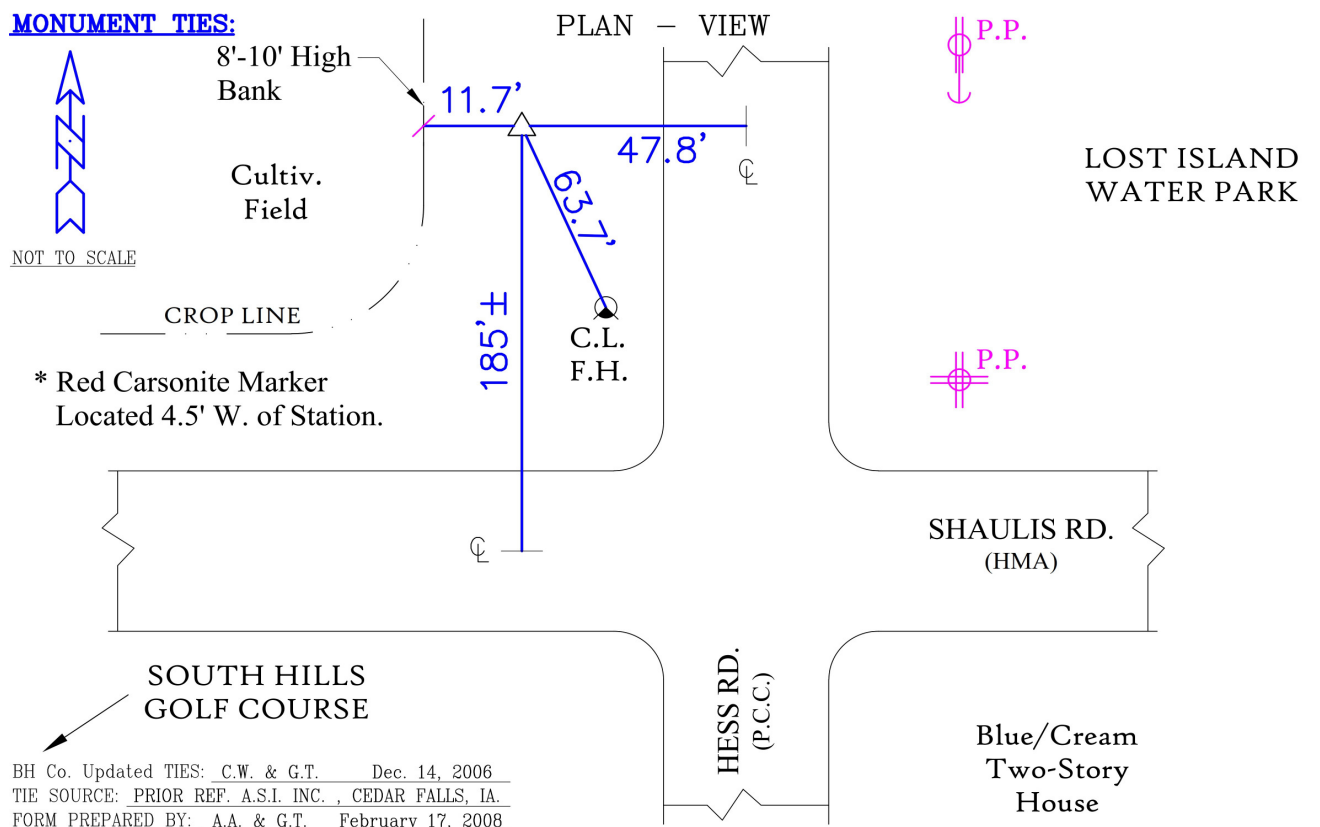
Physical Details: *Station is flush with ground surface located in B.S.*

NAD 83(NA2011) Latitude: **N42°26'36.68671"** Longitude: **W92°19'03.71818"**  
NAVD 88 Ortho Height: **903.261sft** Ellip. Ht: **800.930sft** **Geoid18(Conus)**

Horizontal Datum: NAD 83(NA2011) - Vertical Datum: NAVD 1988  
**Iowa North Zone (1401)** Northing: **3626905.668sft** Easting: **5240355.659sft**  
Mapping Angle: **0°48'05"** Combination Scale Factor: **0.9999146975**

Iowa Regional Coordinate System, Zone 5, Waterloo LCC

**IaRCS Zone 5** Northing: **8824755.052sft** Easting: **15481725.593sft**  
Mapping Angle: **-0°02'45"** Combination Scale Factor: **1.0000001759**



*This document was prepared by Dan Corbin, Inc. for Black Hawk County, Iowa.*



7040



Facing West

