

Black Hawk County, Iowa

Units: US Survey Feet

12/01/2020Point ID: **7038**Stamping on Disk: **94-038**

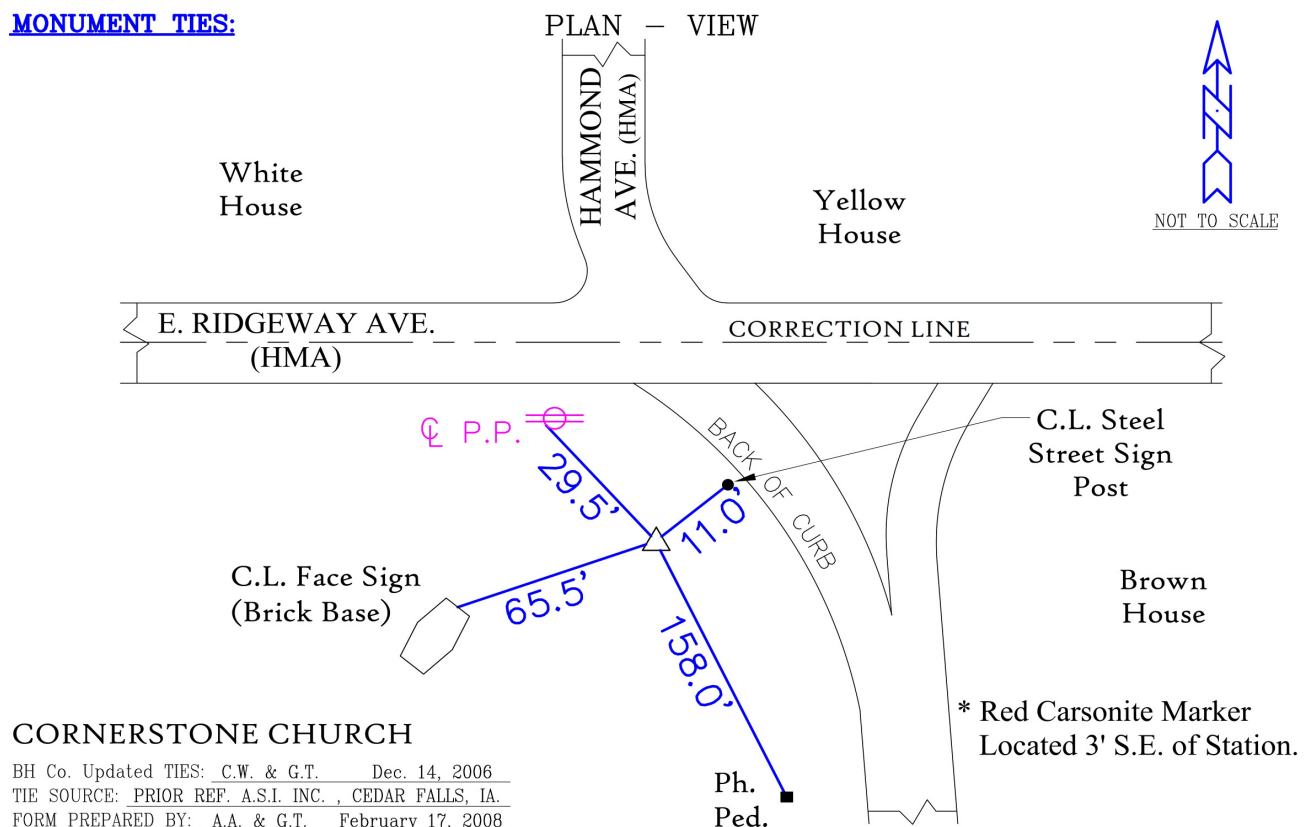
Type of Monument: *Berntsen 5/8" fluted "Top Security" rod, 6ft long with 2.5" dia. aluminum survey cap, NGS style access cover.*

Physical Details: *2006 replaced casing and re-stabilized G.T./C.W.*

NAD 83(NA2011) Latitude: **N42°28'09.22130"** Longitude: **W92°20'13.88886"**
NAVD 88 Ortho Height: **909.787sft** Ellip. Ht: **807.318sft** **Geoid18(Conus)**

Horizontal Datum: NAD 83(NA2011) - Vertical Datum: NAVD 1988
Iowa North Zone (1401) Northing: **3636199.002sft** Easting: **5234966.257sft**
Mapping Angle: **0°47'17"** Combination Scale Factor: **0.9999127470**

Iowa Regional Coordinate System, Zone 5, Waterloo LCC
IaRCS Zone 5 Northing: **8834127.856sft** Easting: **15476473.735sft**
Mapping Angle: **-0°03'33"** Combination Scale Factor: **0.9999983624**

MONUMENT TIES:

This document was prepared by Dan Corbin, Inc. for Black Hawk County, Iowa.

7038



Facing South

