

Black Hawk County, Iowa

Units: US Survey Feet

12/01/2020

Point ID: **7032**Stamping on Disk: **94-032**

Type of Monument: *Berntsen 5/8" fluted "Top Security" rod, 6ft long with 2.5" dia. aluminum survey cap, NGS style access cover.*

Physical Details: *Station is flush with ground surface at TBKS. Placed stone ring around sta. for protection and location.*

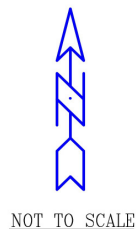
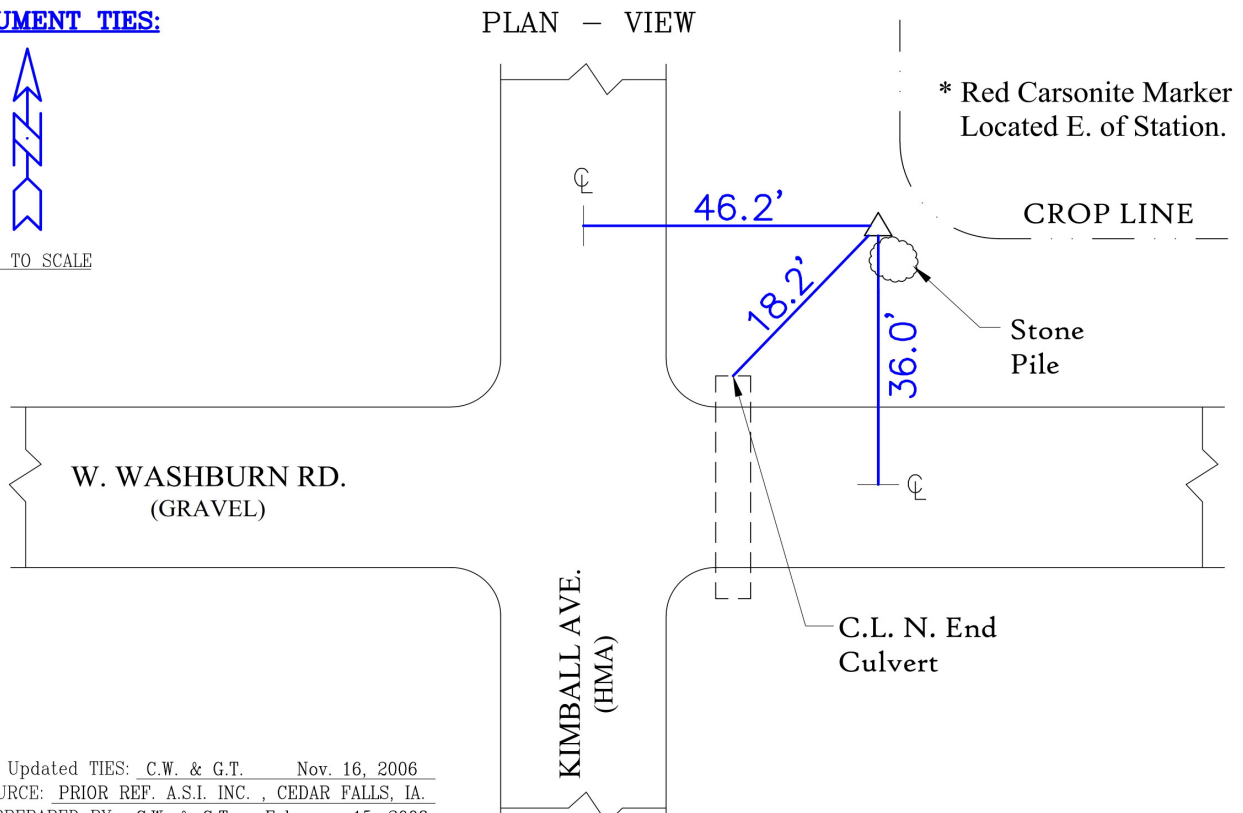
NAD 83(NA2011) Latitude: **N42°24'50.63894"** Longitude: **W92°21'25.13635"**
NAVD 88 Ortho Height: **941.082sft** Ellip. Ht: **838.520sft** **Geoid18(Conus)**

Horizontal Datum: NAD 83(NA2011) - Vertical Datum: NAVD 1988

Iowa North Zone (1401) Northing: **3616025.749sft** Easting: **5229898.931sft**
Mapping Angle: **0°46'29"** Combination Scale Factor: **0.9999150318**

Iowa Regional Coordinate System, Zone 5, Waterloo LCC

IaRCS Zone 5 Northing: **8814030.012sft** Easting: **15471108.239sft**
Mapping Angle: **-0°04'21"** Combination Scale Factor: **1.0000003531**

MONUMENT TIES:**PLAN - VIEW**

BH Co. Updated TIES: C.W. & G.T. Nov. 16, 2006
TIE SOURCE: PRIOR REF. A.S.I. INC., CEDAR FALLS, IA.
FORM PREPARED BY: C.W. & G.T. February 15, 2008

This document was prepared by Dan Corbin, Inc. for Black Hawk County, Iowa.

7032



Facing East

