

Black Hawk County, Iowa**12/01/2020**

Units: US Survey Feet

Point ID: **7030**Stamping on Disk: **94-030**

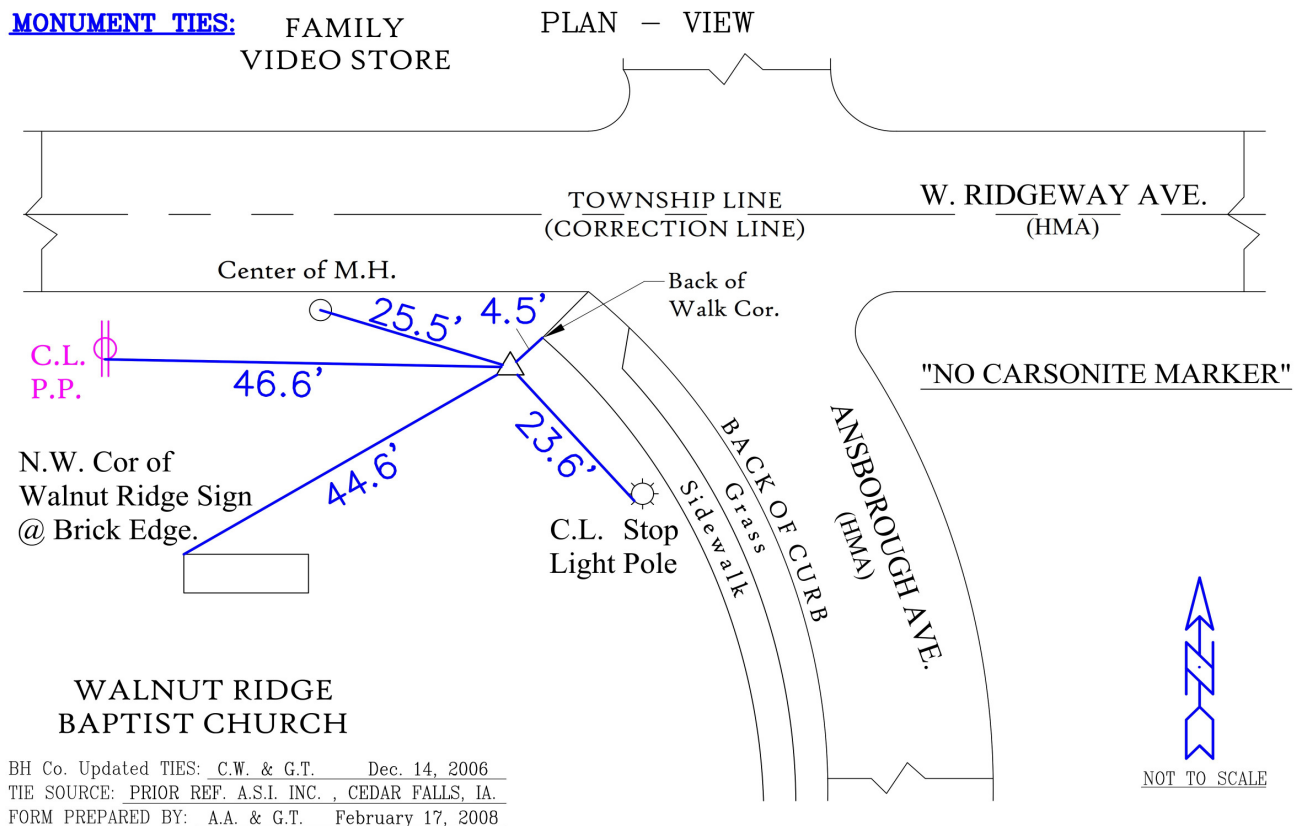
Type of Monument: *Berntsen 5/8" fluted "Top Security" rod, 6ft long with 2.5" dia. aluminum survey cap, NGS style access cover.*

Physical Details: *Station is flush with ground surface located in mowed lawn at southwest corner of intersection.*

NAD 83(NA2011) Latitude: **N42°28'09.29001"** Longitude: **W92°22'35.81864"**
NAVD 88 Ortho Height: **922.215sft** Ellip. Ht: **819.477sft** **Geoid18(Conus)**

Horizontal Datum: NAD 83(NA2011) - Vertical Datum: NAVD 1988
Iowa North Zone (1401) Northing: **3636062.134sft** Easting: **5224330.277sft**
Mapping Angle: **0°45'41"** Combination Scale Factor: **0.9999121647**

Iowa Regional Coordinate System, Zone 5, Waterloo LCC
IaRCS Zone 5 Northing: **8834148.259sft** Easting: **15465835.983sft**
Mapping Angle: **-0°05'09"** Combination Scale Factor: **0.9999977802**



This document was prepared by Dan Corbin, Inc. for Black Hawk County, Iowa.

7030



Facing South

