

Black Hawk County, Iowa

Units: US Survey Feet

12/01/2020

Point ID: **7027**Stamping on Disk: **94-027**

Type of Monument: *Berntsen 5/8" fluted "Top Security" rod, 6ft long with 2.5" dia. aluminum survey cap, NGS style access cover.*

Physical Details: *Station is flush with ground surface at +/- R.O.W. Also 3.5' east of TBKS.*

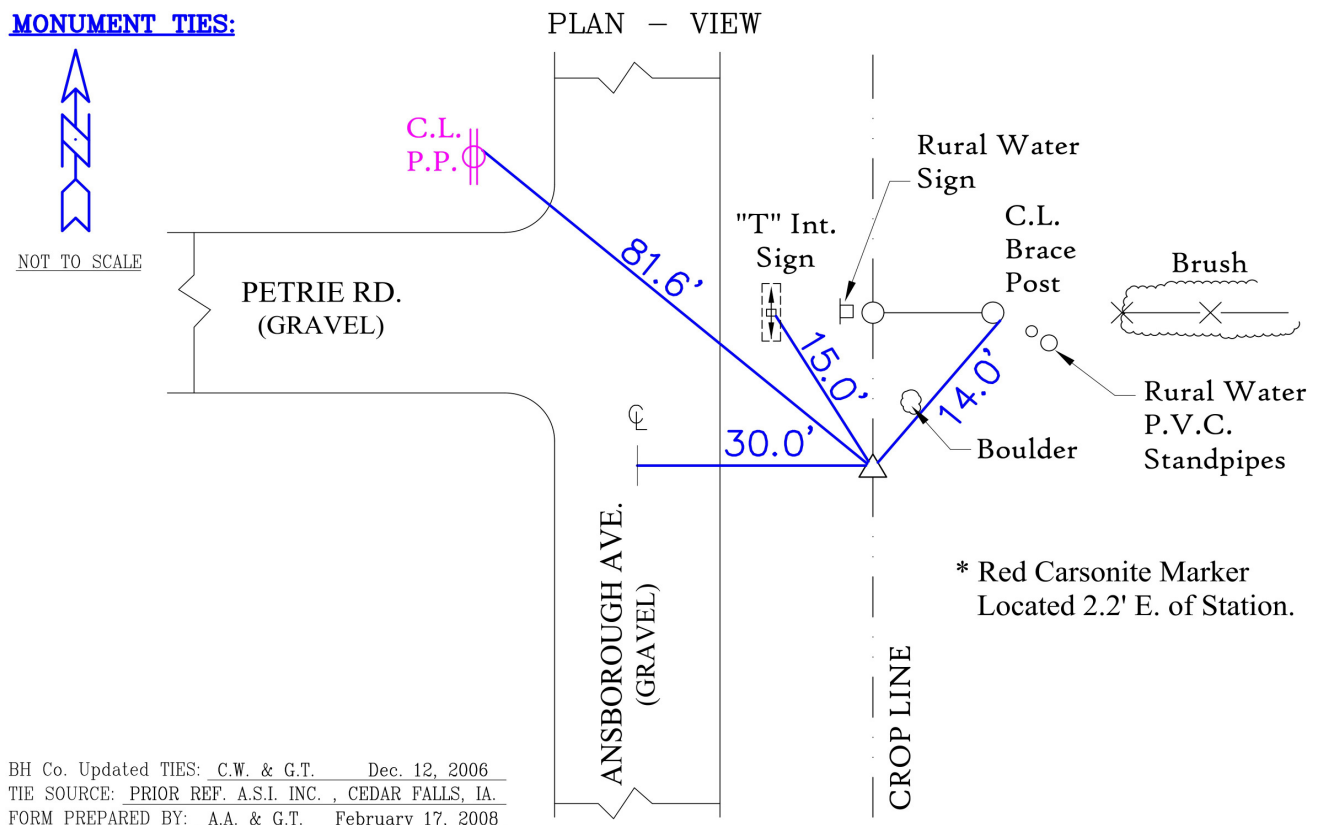
NAD 83(NA2011) Latitude: **N42°23'05.46553"** Longitude: **W92°22'37.10563"**
NAVD 88 Ortho Height: **958.935sft** Ellip. Ht: **856.216sft** Geoid18(Conus)

Horizontal Datum: NAD 83(NA2011) - Vertical Datum: NAVD 1988

Iowa North Zone (1401) Northing: **3605307.796sft** Easting: **5224642.384sft**
Mapping Angle: **0°45'40"** Combination Scale Factor: **0.9999165586**

Iowa Regional Coordinate System, Zone 5, Waterloo LCC

IaRCS Zone 5 Northing: **8803390.042sft** Easting: **15465693.339sft**
Mapping Angle: **-0°05'10"** Combination Scale Factor: **1.0000017241**

MONUMENT TIES:

This document was prepared by Dan Corbin, Inc. for Black Hawk County, Iowa.

7027



Facing East

