

Black Hawk County, Iowa**12/01/2020**

Units: US Survey Feet

Point ID: **7024**Stamping on Disk: **94-024**

Type of Monument: *Berntsen 5/8" fluted "Top Security" rod, 6ft long with 2.5" dia. aluminum survey cap, NGS style access cover.*

Physical Details: *Station is flush with ground surface at TBKS.*

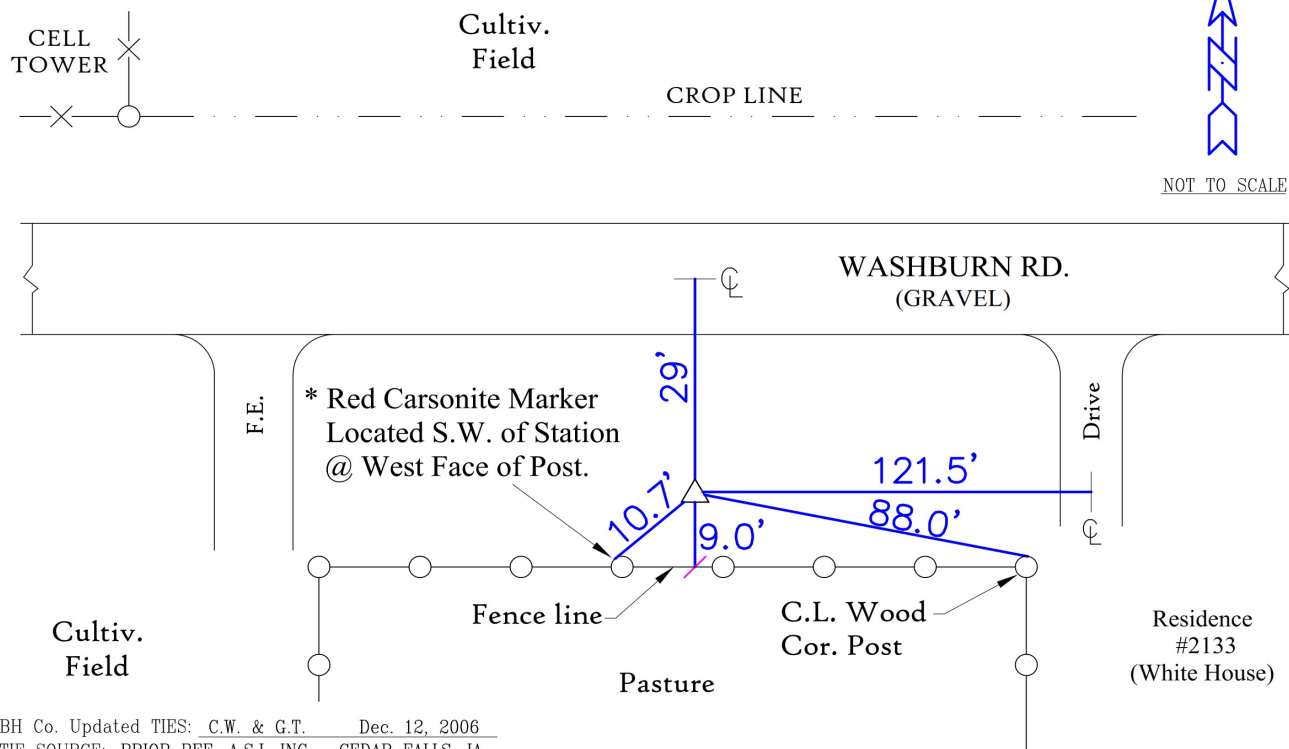
NAD 83(NA2011) Latitude: **N42°24'49.69545"** Longitude: **W92°24'02.41393"**
NAVD 88 Ortho Height: **949.044sft** Ellip. Ht: **846.197sft** Geoid18(Conus)

Horizontal Datum: NAD 83(NA2011) - Vertical Datum: NAVD 1988
Iowa North Zone (1401) Northing: **3615773.793sft** Easting: **5218103.727sft**
Mapping Angle: **0°44'42"** Combination Scale Factor: **0.9999146850**

Iowa Regional Coordinate System, Zone 5, Waterloo LCC
IaRCS Zone 5 Northing: **8813952.469sft** Easting: **15459309.592sft**
Mapping Angle: **-0°06'07"** Combination Scale Factor: **1.0000000048**

MONUMENT TIES:

PLAN - VIEW



BH Co. Updated TIES: C.W. & G.T. Dec. 12, 2006
TIE SOURCE: PRIOR REF. A.S.I. INC., CEDAR FALLS, IA.
FORM PREPARED BY: A.A. & G.T. February 17, 2008

This document was prepared by Dan Corbin, Inc. for Black Hawk County, Iowa.

7024



Facing South

