

Black Hawk County, Iowa

Units: US Survey Feet

12/01/2020

Point ID: **7023**Stamping on Disk: **94-023**

Type of Monument: *Berntsen 5/8" fluted "Top Security" rod, 6ft long with 2.5" dia. aluminum survey cap, NGS style access cover.*

Physical Details: *Station is flush with ground surface located in mowed R.O.W. ditch.*

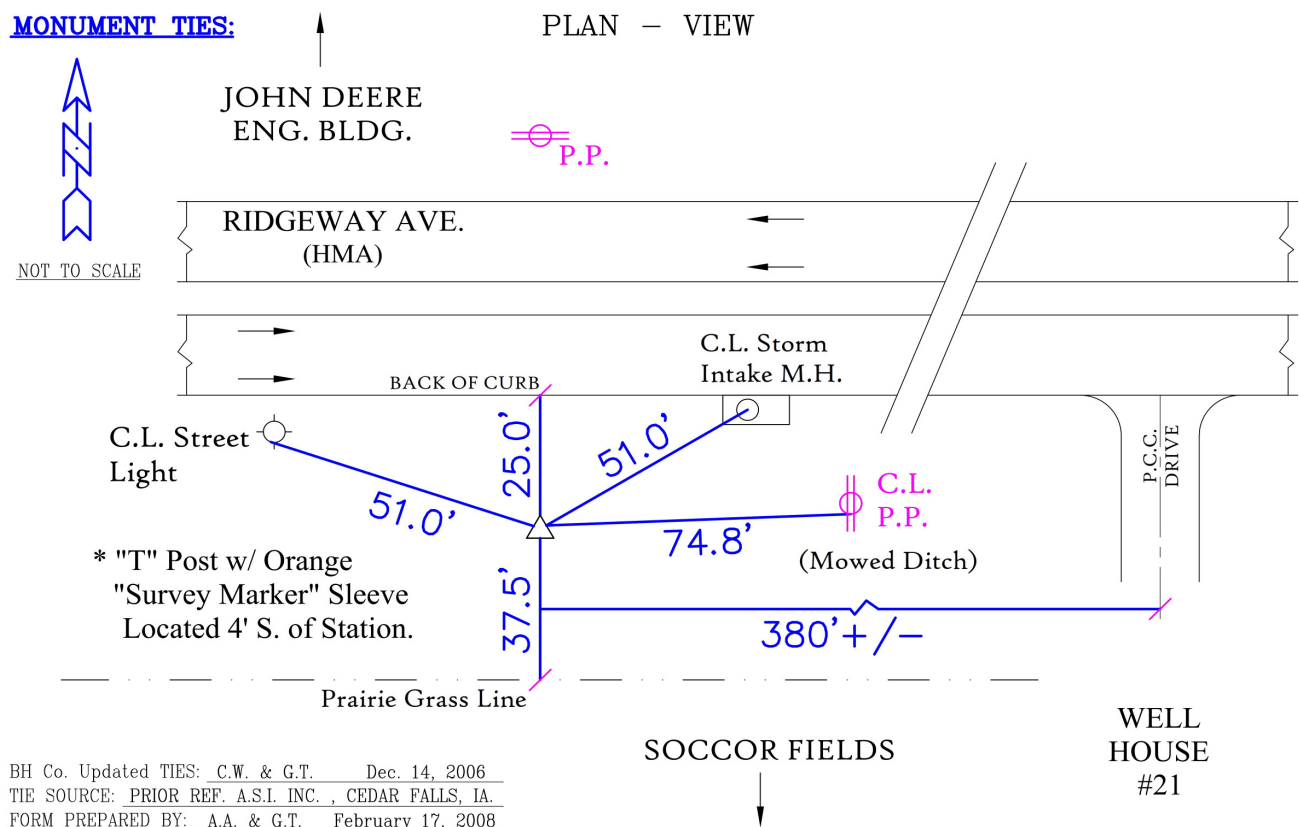
NAD 83(NA2011) Latitude: **N42°28'10.96245"** Longitude: **W92°25'08.72123"**
NAVD 88 Ortho Height: **899.847sft** Ellip. Ht: **796.772sft** Geoid18(Conus)

Horizontal Datum: NAD 83(NA2011) - Vertical Datum: NAVD 1988

Iowa North Zone (1401) Northing: **3636082.029sft** Easting: **5212869.876sft**
Mapping Angle: **0°43'57"** Combination Scale Factor: **0.9999132221**

Iowa Regional Coordinate System, Zone 5, Waterloo LCC

IaRCS Zone 5 Northing: **8834337.610sft** Easting: **15454376.148sft**
Mapping Angle: **-0°06'52"** Combination Scale Factor: **0.9999988401**



This document was prepared by Dan Corbin, Inc. for Black Hawk County, Iowa.

7023



Facing South

