

Black Hawk County, Iowa

Units: US Survey Feet

12/01/2020

Point ID: **7022**Stamping on Disk: **94-022**

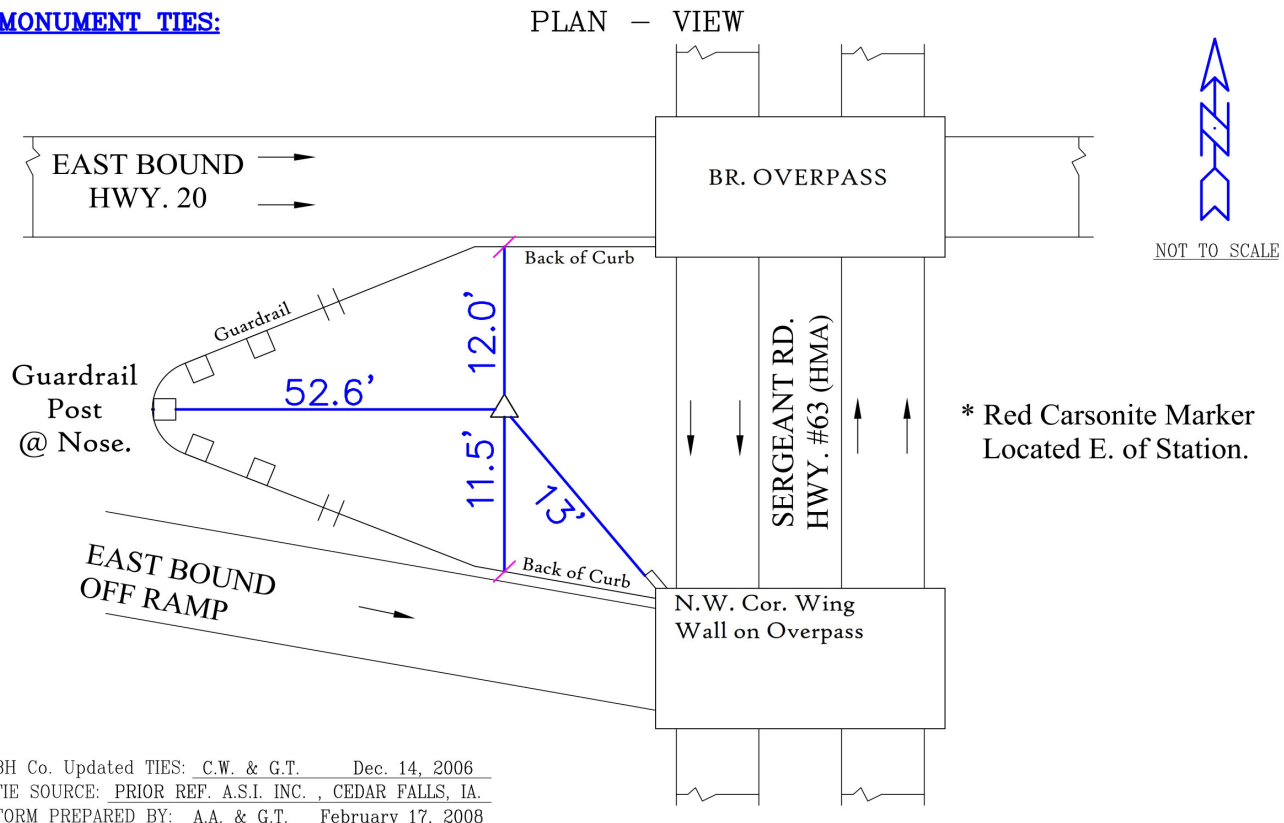
Type of Monument: *Berntsen 5/8" fluted "Top Security" rod, 6ft long with 2.5" dia. aluminum survey cap, NGS style access cover.*

Physical Details: *Station is flush with ground surface located in center of grass median.*

NAD 83(NA2011) Latitude: **N42°27'31.04550"** Longitude: **W92°24'22.00739"**
NAVD 88 Ortho Height: **893.266sft** Ellip. Ht: **790.322sft** **Geoid18(Conus)**

Horizontal Datum: NAD 83(NA2011) - Vertical Datum: NAVD 1988
Iowa North Zone (1401) Northing: **3632086.639sft** Easting: **5216422.790sft**
Mapping Angle: **0°44'29"** Combination Scale Factor: **0.9999142139**

Iowa Regional Coordinate System, Zone 5, Waterloo LCC
IaRCS Zone 5 Northing: **8830289.781sft** Easting: **15457869.901sft**
Mapping Angle: **-0°06'21"** Combination Scale Factor: **0.9999997728**

MONUMENT TIES:

This document was prepared by Dan Corbin, Inc. for Black Hawk County, Iowa.

7022



Facing East

