

Black Hawk County, Iowa**12/01/2020**

Units: US Survey Feet

Point ID: **7021**Stamping on Disk: **94-021**

Type of Monument: *Berntsen 5/8" fluted "Top Security" rod, 6ft long with 2.5" dia. aluminum survey cap, NGS style access cover.*

Physical Details: *Station is 2" +/- above ground surface located at top of back slope.*

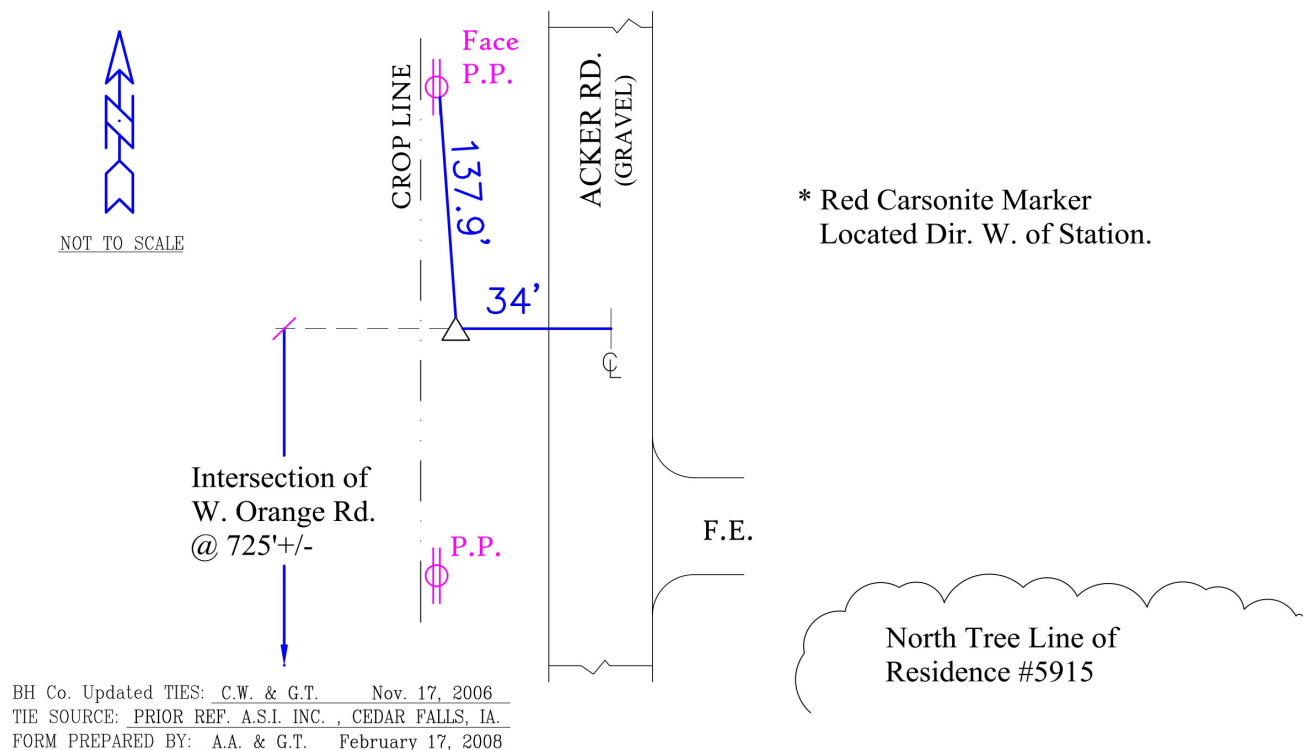
NAD 83(NA2011) Latitude: **N42°25'49.45379"** Longitude: **W92°25'02.18845"**
NAVD 88 Ortho Height: **941.287sft** Ellip. Ht: **838.306sft** **Geoid18(Conus)**

Horizontal Datum: NAD 83(NA2011) - Vertical Datum: NAVD 1988
Iowa North Zone (1401) Northing: **3621764.691sft** Easting: **5213542.887sft**
Mapping Angle: **0°44'02"** Combination Scale Factor: **0.9999138278**

Iowa Regional Coordinate System, Zone 5, Waterloo LCC
IaRCS Zone 5 Northing: **8820010.661sft** Easting: **15454837.444sft**
Mapping Angle: **-0°06'48"** Combination Scale Factor: **0.9999992361**

MONUMENT TIES:

PLAN — VIEW



This document was prepared by Dan Corbin, Inc. for Black Hawk County, Iowa.

7021



Facing West

