

**Black Hawk County, Iowa**

Units: US Survey Feet

**12/01/2020**Point ID: **7020**Stamping on Disk: **2003-RESET 94-020**

Type of Monument: *Berntsen 5/8" fluted "Top Security" rod, 6ft long with 2.5" dia. aluminum survey cap, NGS style access cover.*

Physical Details: *Station is flush with ground surface located beyond top of back slope.*

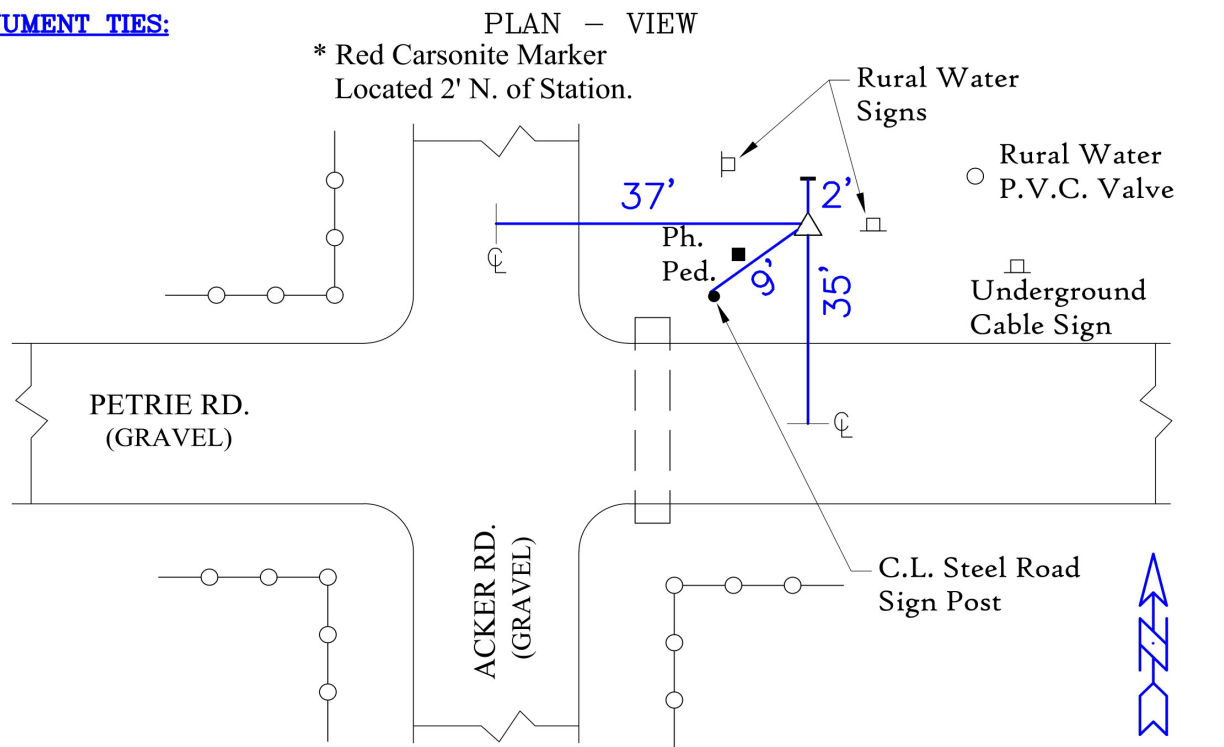
NAD 83(NA2011) Latitude: **N42°23'05.75157"** Longitude: **W92°25'01.11351"**  
NAVD 88 Ortho Height: **976.406sft** Ellip. Ht: **873.437sft** **Geoid18(Conus)**

Horizontal Datum: NAD 83(NA2011) - Vertical Datum: NAVD 1988

**Iowa North Zone (1401)** Northing: **3605195.746sft** Easting: **5213835.779sft**  
Mapping Angle: **0°44'02"** Combination Scale Factor: **0.9999157286**

Iowa Regional Coordinate System, Zone 5, Waterloo LCC

**IaRCS Zone 5** Northing: **8803437.784sft** Easting: **15454885.339sft**  
Mapping Angle: **-0°06'47"** Combination Scale Factor: **1.0000008945**

**MONUMENT TIES:**

BH Co. Updated TIES: C.W. & G.T. Dec. 11, 2006  
TIE SOURCE: BLACK HAWK COUNTY ENGINEER'S DEPT.  
FORM PREPARED BY: A.A. & G.T. February 17, 2008

*This document was prepared by Dan Corbin, Inc. for Black Hawk County, Iowa.*

7020



Facing North

