

Black Hawk County, Iowa**12/01/2020**

Units: US Survey Feet

Point ID: **7019**Stamping on Disk: **94-019**

Type of Monument: *Berntsen 5/8" fluted "Top Security" rod, 6ft long with 2.5" dia. aluminum survey cap, NGS style access cover.*

Physical Details: *Station is flush with ground surface located at toe of back slope.*

NAD 83(NA2011) Latitude: **N42°20'26.54728"** Longitude: **W92°25'01.90788"**
NAVD 88 Ortho Height: **976.522sft** Ellip. Ht: **873.504sft** **Geoid18(Conus)**

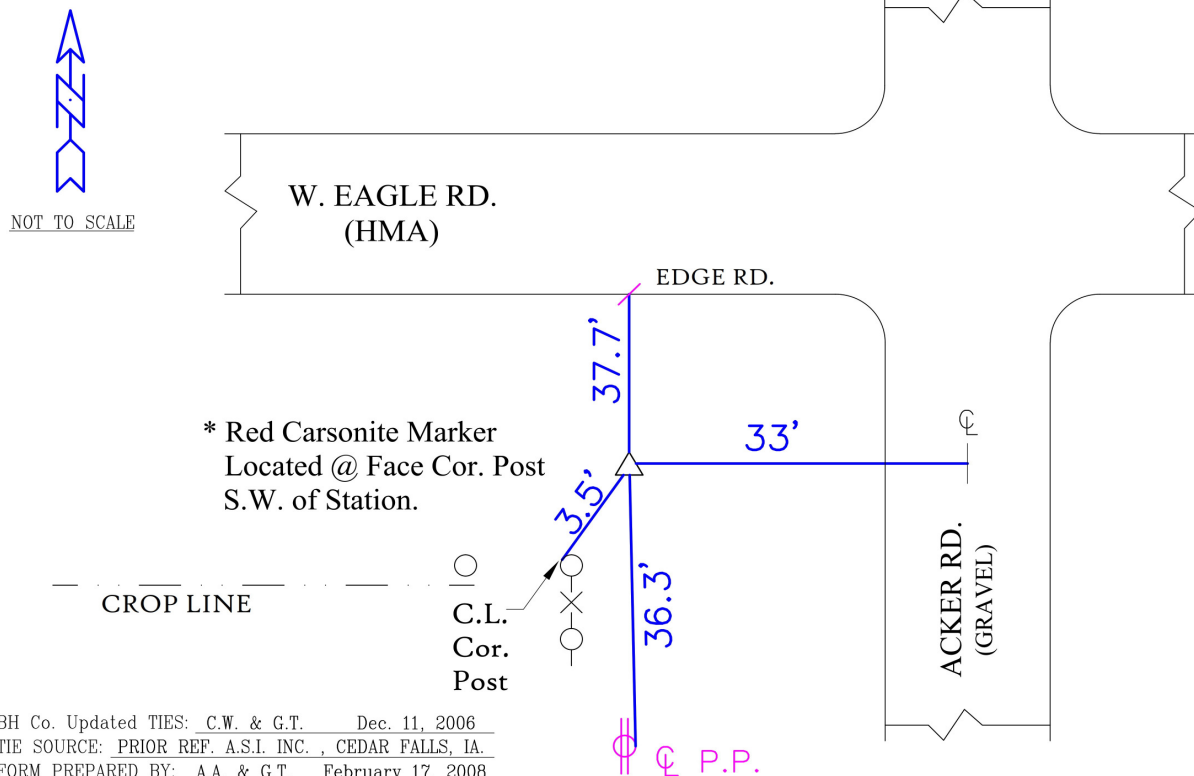
Horizontal Datum: NAD 83(NA2011) - Vertical Datum: NAVD 1988
Iowa North Zone (1401) Northing: **3589080.351sft** Easting: **5213982.583sft**
Mapping Angle: **0°44'02"** Combination Scale Factor: **0.9999198062**

Iowa Regional Coordinate System, Zone 5, Waterloo LCC

IaRCS Zone 5 Northing: **8787320.609sft** Easting: **15454793.855sft**
Mapping Angle: **-0°06'48"** Combination Scale Factor: **1.0000047368**

MONUMENT TIES:

PLAN - VIEW



This document was prepared by Dan Corbin, Inc. for Black Hawk County, Iowa.

7019



Facing Southwest

