

Black Hawk County, Iowa

Units: US Survey Feet

12/01/2020

Point ID: **7018**Stamping on Disk: **94-018**

Type of Monument: *Berntsen 5/8" fluted "Top Security" rod, 6ft long with 2.5" dia. aluminum survey cap, NGS style access cover.*

Physical Details: *Station is located 2"-3" deep in south side of field entrance and 1.5' east of cultivated field edge.*

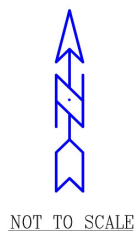
NAD 83(NA2011) Latitude: **N42°17'58.12050"** Longitude: **W92°25'01.46242"**
NAVD 88 Ortho Height: **1001.786sft** Ellip. Ht: **898.700sft** **Geoid18(Conus)**

Horizontal Datum: NAD 83(NA2011) - Vertical Datum: NAVD 1988

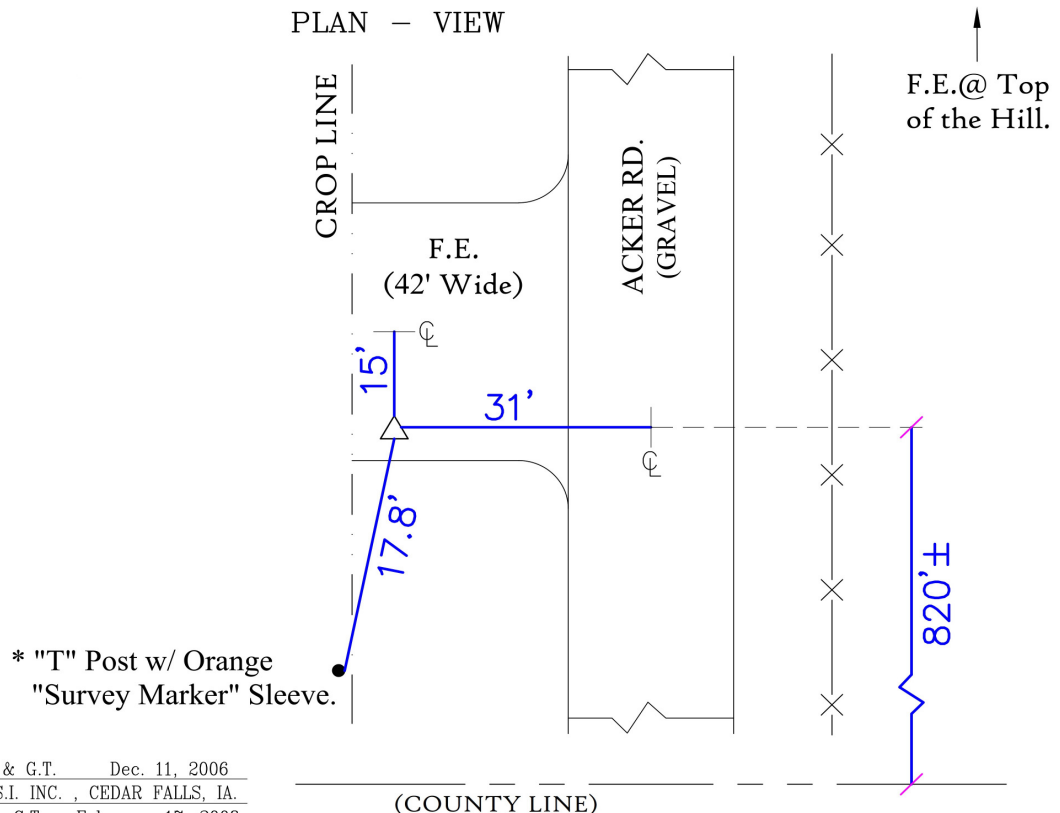
Iowa North Zone (1401) Northing: **3574057.095sft** Easting: **5214208.495sft**
Mapping Angle: **0°44'02"** Combination Scale Factor: **0.9999229383**

Iowa Regional Coordinate System, Zone 5, Waterloo LCC

IaRCS Zone 5 Northing: **8772294.380sft** Easting: **15454797.625sft**
Mapping Angle: **-0°06'48"** Combination Scale Factor: **1.0000076495**

MONUMENT TIES:

PLAN - VIEW



BH Co. Updated TIES: C.W. & G.T. Dec. 11, 2006
TIE SOURCE: PRIOR REF. A.S.I. INC., CEDAR FALLS, IA.
FORM PREPARED BY: A.A. & G.T. February 17, 2008

This document was prepared by Dan Corbin, Inc. for Black Hawk County, Iowa.

7018



Facing South

