

**Black Hawk County, Iowa**

Units: US Survey Feet

12/01/2020

Point ID: **7017**Stamping on Disk: **94-017**

Type of Monument: *Berntsen 5/8" fluted "Top Security" rod, 6ft long with 2.5" dia. aluminum survey cap, NGS style access cover.*

Physical Details: *Station is flush with ground surface located at B.S./D.L.*

NAD 83(NA2011) Latitude: **N42°24'50.05435"** Longitude: **W92°26'13.73503"**  
NAVD 88 Ortho Height: **906.162sft** Ellip. Ht: **803.034sft** Geoid18(Conus)

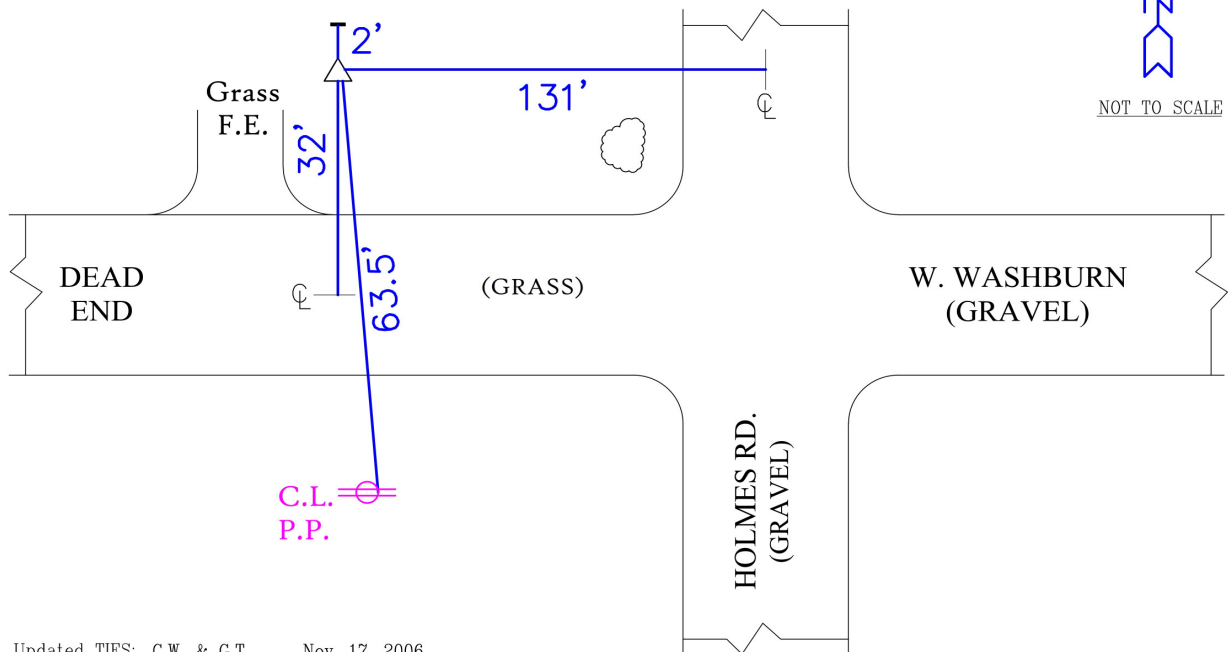
Horizontal Datum: NAD 83(NA2011) - Vertical Datum: NAVD 1988  
**Iowa North Zone (1401)** Northing: **3615684.156sft** Easting: **5208253.562sft**  
Mapping Angle: **0°43'13"** Combination Scale Factor: **0.9999167405**

Iowa Regional Coordinate System, Zone 5, Waterloo LCC  
**IaRCS Zone 5** Northing: **8814008.480sft** Easting: **15449458.338sft**  
Mapping Angle: **-0°07'36"** Combination Scale Factor: **1.0000020610**

**MONUMENT TIES:**

PLAN — VIEW

- \* Red Carsonite Marker  
Located 2' N. of Station.



BH Co. Updated TIES: C.W. & G.T. Nov. 17, 2006  
TIE SOURCE: PRIOR REF. A.S.I. INC., CEDAR FALLS, IA.  
FORM PREPARED BY: A.A. & G.T. February 17, 2008

*This document was prepared by Dan Corbin, Inc. for Black Hawk County, Iowa.*



7017



Facing North

