

**Black Hawk County, Iowa**

Units: US Survey Feet

12/01/2020

Point ID: **7015**Stamping on Disk: **2016-15R**

Type of Monument: *Berntsen 5/8" fluted "Top Security" rod, 6ft long with 2.5" dia. aluminum survey cap, NGS style access cover.*

Physical Details: *Station is flush with ground surface, located +/-5' east of set red Carsonite marker.*

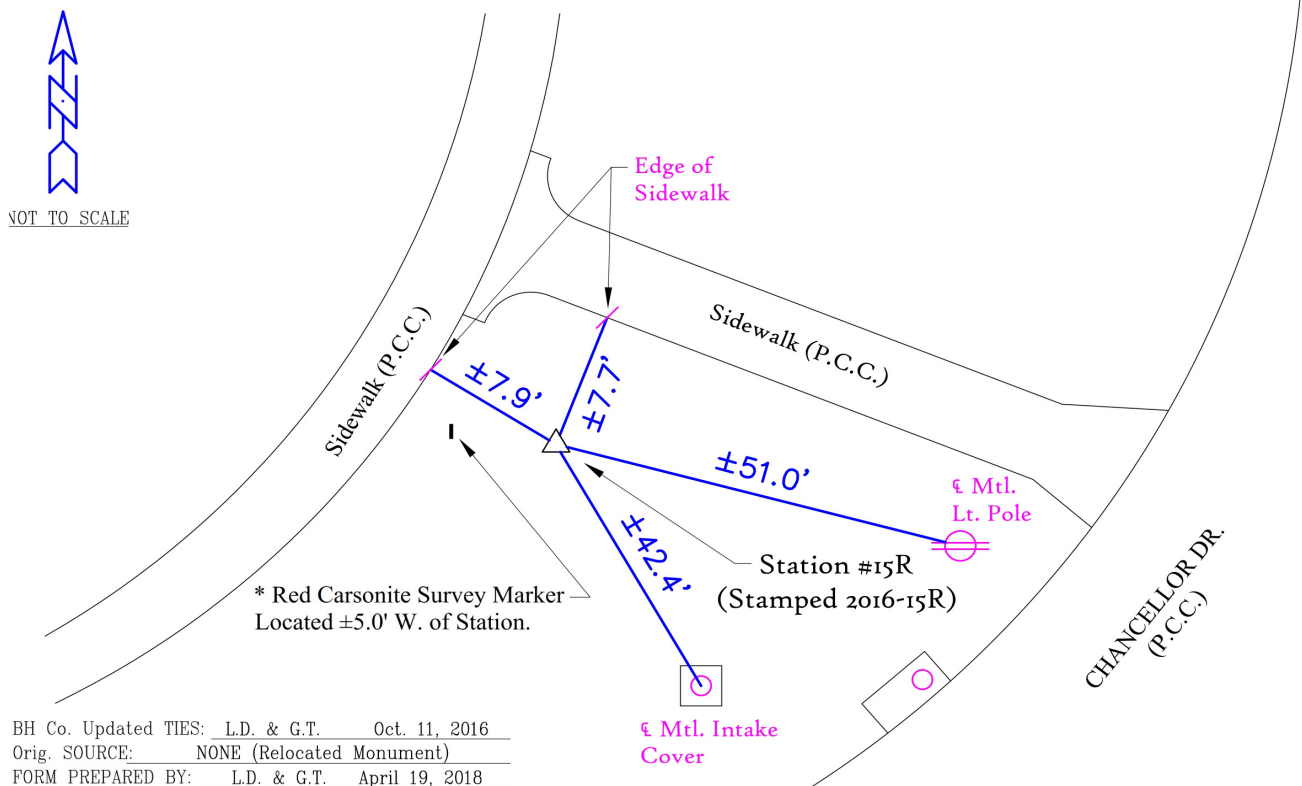
NAD 83(NA2011) Latitude: **N42°28'11.77579"** Longitude: **W92°27'16.92377"**  
NAVD 88 Ortho Height: **962.090sft** Ellip. Ht: **858.748sft** **Geoid18(Conus)**

Horizontal Datum: NAD 83(NA2011) - Vertical Datum: NAVD 1988

**Iowa North Zone (1401)** Northing: **3636043.536sft** Easting: **5203261.612sft**  
Mapping Angle: **0°42'30"** Combination Scale Factor: **0.9999102463**

Iowa Regional Coordinate System, Zone 5, Waterloo LCC

**IaRCS Zone 5** Northing: **8834441.186sft** Easting: **15444767.543sft**  
Mapping Angle: **-0°08'19"** Combination Scale Factor: **0.9999958653**

**MONUMENT TIES:****PLAN - VIEW**

*This document was prepared by Dan Corbin, Inc. for Black Hawk County, Iowa.*

7015



Facing West

