

Black Hawk County, Iowa**12/01/2020**

Units: US Survey Feet

Point ID: **7014**Stamping on Disk: **94-014**

Type of Monument: *Berntsen 5/8" fluted "Top Security" rod, 6ft long with 2.5" dia. aluminum survey cap, NGS style access cover.*

Physical Details: *Station is flush with ground surface, aligned with crop lines N/S in SW corner of west field entrance.*

NAD 83(NA2011) Latitude: **N42°24'58.24660"** Longitude: **W92°27'57.74499"**
NAVD 88 Ortho Height: **887.850sft** Ellip. Ht: **784.498sft** **Geoid18(Conus)**

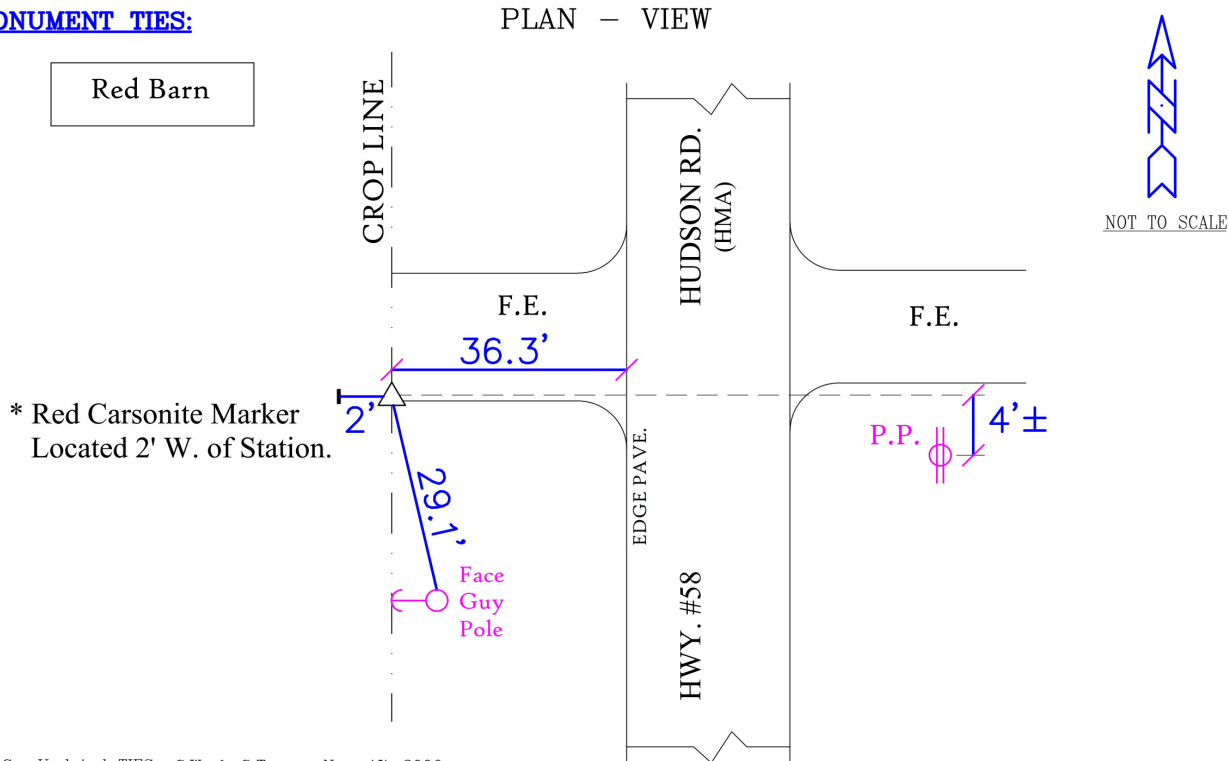
Horizontal Datum: NAD 83(NA2011) - Vertical Datum: NAVD 1988

Iowa North Zone (1401) Northing: **3616416.631sft** Easting: **5200442.151sft**Mapping Angle: **0°42'03"** Combination Scale Factor: **0.9999174523**

Iowa Regional Coordinate System, Zone 5, Waterloo LCC

IaRCS Zone 5 Northing: **8814856.437sft** Easting: **15441657.945sft**Mapping Angle: **-0°08'47"** Combination Scale Factor: **1.0000027851****MONUMENT TIES:**

PLAN - VIEW



BH Co. Updated TIES: C.W. & G.T. Nov. 17, 2006
Orig. SOURCE: PRIOR REF. A.S.I. INC., CEDAR FALLS, IA.
FORM PREPARED BY: A.A. & G.T. February 17, 2008

This document was prepared by Dan Corbin, Inc. for Black Hawk County, Iowa.

7014



Facing West

