

Black Hawk County, Iowa

Units: US Survey Feet

12/01/2020Point ID: **7012**Stamping on Disk: **94-012**

Type of Monument: *Berntsen 5/8" fluted "Top Security" rod, 6ft long with 2.5" dia. aluminum survey cap, NGS style access cover.*

Physical Details: *Station is flush with top slope at the south edge of residencial drive.*

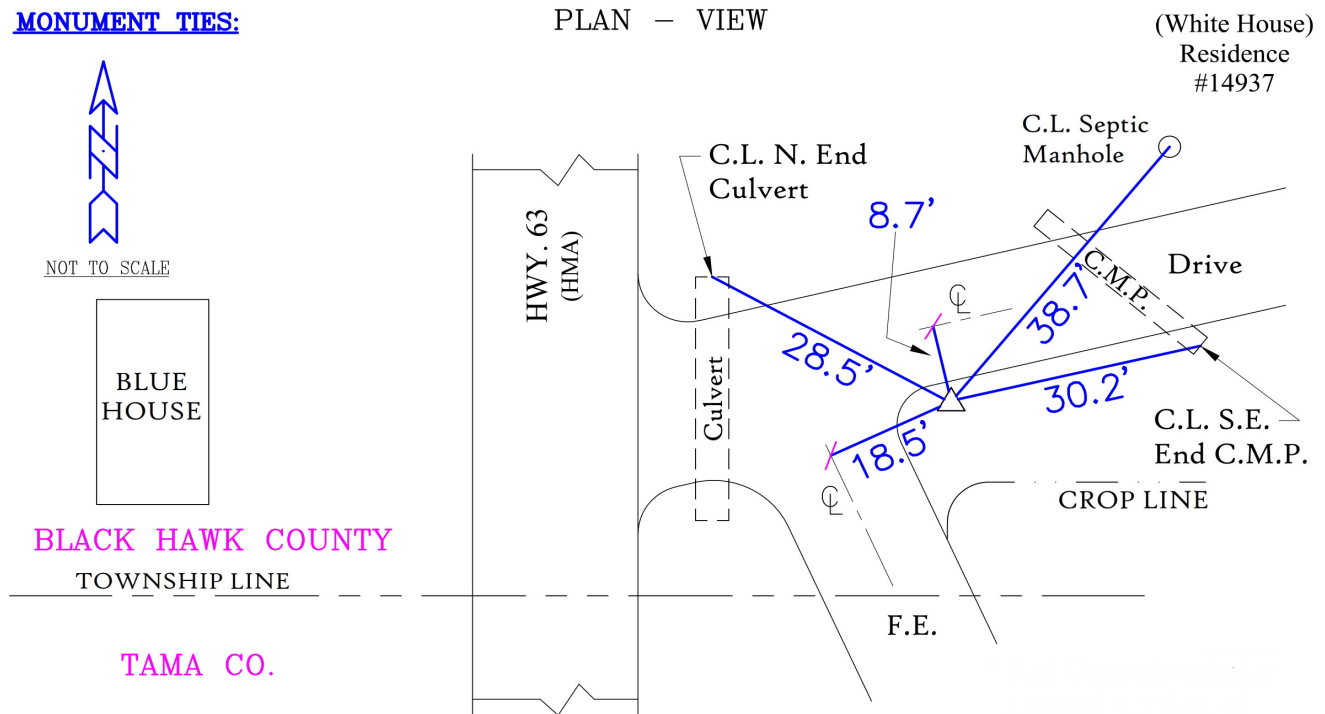
NAD 83(NA2011) Latitude: **N42°17'49.78663"** Longitude: **W92°27'19.34344"**
NAVD 88 Ortho Height: **978.055sft** Ellip. Ht: **874.750sft** **Geoid18(Conus)**

Horizontal Datum: NAD 83(NA2011) - Vertical Datum: NAVD 1988
Iowa North Zone (1401) Northing: **3573083.164sft** Easting: **5203858.285sft**
Mapping Angle: **0°42'29"** Combination Scale Factor: **0.9999243418**

Iowa Regional Coordinate System, Zone 5, Waterloo LCC
IaRCS Zone 5 Northing: **8771473.512sft** Easting: **15444433.268sft**
Mapping Angle: **-0°08'21"** Combination Scale Factor: **1.0000090407**

MONUMENT TIES:

PLAN - VIEW



BH Co. Updated TIES: C.W. & G.T. Dec. 11, 2006
Orig. SOURCE: PRIOR REF. A.S.I. INC., CEDAR FALLS, IA.
FORM PREPARED BY: A.A. & G.T. February 17, 2008

This document was prepared by Dan Corbin, Inc. for Black Hawk County, Iowa.

7012



Facing East

