

Black Hawk County, Iowa**12/01/2020**

Units: US Survey Feet

Point ID: **7011**Stamping on Disk: **94-011**

Type of Monument: *Berntsen 5/8" fluted "Top Security" rod, 6ft long with 2.5" dia. aluminum survey cap, NGS style access cover.*

Physical Details: *Station is flush with ground surface located at toe of back slope.*

NAD 83(NA2011) Latitude: **N42°28'10.81448"** Longitude: **W92°29'44.03670"**
NAVD 88 Ortho Height: **976.359sft** Ellip. Ht: **872.751sft** **Geoid18(Conus)**

Horizontal Datum: NAD 83(NA2011) - Vertical Datum: NAVD 1988

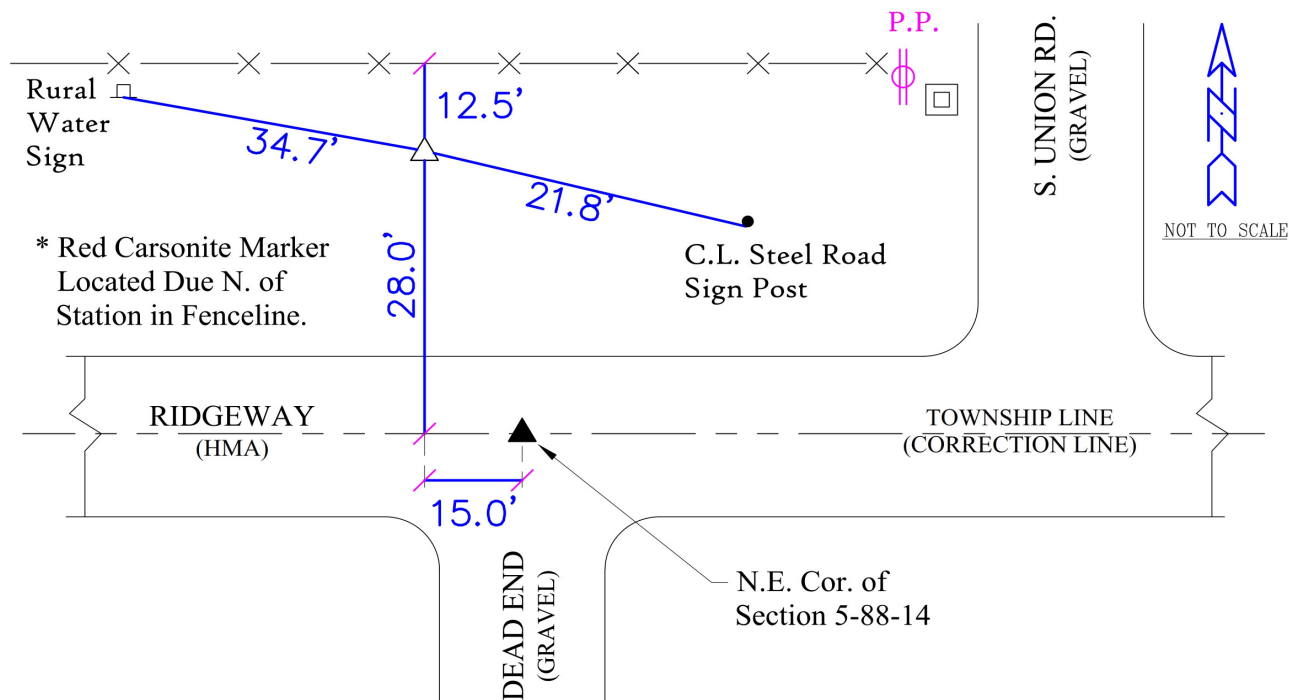
Iowa North Zone (1401) Northing: **3635812.575sft** Easting: **5192238.394sft**
Mapping Angle: **0°40'51"** Combination Scale Factor: **0.9999095930**

Iowa Regional Coordinate System, Zone 5, Waterloo LCC

IaRCS Zone 5 Northing: **8834373.219sft** Easting: **15433741.170sft**
Mapping Angle: **-0°09'59"** Combination Scale Factor: **0.9999952105**

MONUMENT TIES:

PLAN - VIEW



BH Co. Updated TIES: C.W. & G.T. Dec. 11, 2006
Orig. SOURCE: PRIOR REF. A.S.I. INC., CEDAR FALLS, IA.
FORM PREPARED BY: A.A. & G.T. February 17, 2008

This document was prepared by Dan Corbin, Inc. for Black Hawk County, Iowa.

7011



Facing North

