

Black Hawk County, Iowa

Units: US Survey Feet

12/01/2020

Point ID: **7009**Stamping on Disk: **94-009**

Type of Monument: *Berntsen 5/8" fluted "Top Security" rod, 6ft long with 2.5" dia. aluminum survey cap, NGS style access cover.*

Physical Details: *Station is flush with ground surface located at TBKS.*

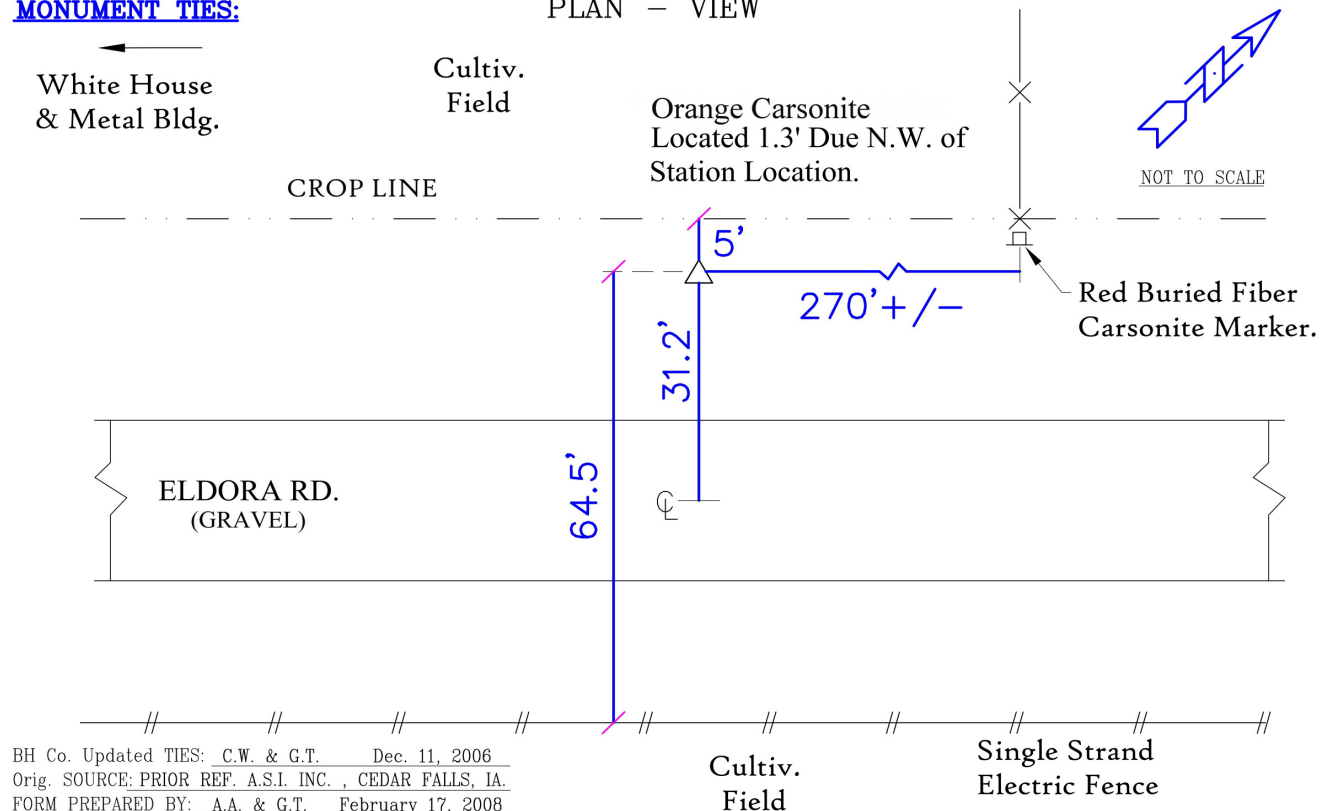
NAD 83(NA2011) Latitude: **N42°23'03.66197"** Longitude: **W92°29'22.40120"**
NAVD 88 Ortho Height: **892.620sft** Ellip. Ht: **789.127sft** Geoid18(Conus)

Horizontal Datum: NAD 83(NA2011) - Vertical Datum: NAVD 1988

Iowa North Zone (1401) Northing: **3604741.455sft** Easting: **5194231.353sft**
Mapping Angle: **0°41'05"** Combination Scale Factor: **0.9999198082**

Iowa Regional Coordinate System, Zone 5, Waterloo LCC

IaRCS Zone 5 Northing: **8803273.374sft** Easting: **15435274.669sft**
Mapping Angle: **-0°09'44"** Combination Scale Factor: **1.0000049713**

MONUMENT TIES:**PLAN - VIEW**

This document was prepared by Dan Corbin, Inc. for Black Hawk County, Iowa.

7009



Facing Northwest

