

Black Hawk County, Iowa

Units: US Survey Feet

12/01/2020

Point ID: **7008**Stamping on Disk: **94-008**

Type of Monument: *Berntsen 5/8" fluted "Top Security" rod, 6ft long with 2.5" dia. aluminum survey cap, NGS style access cover.*

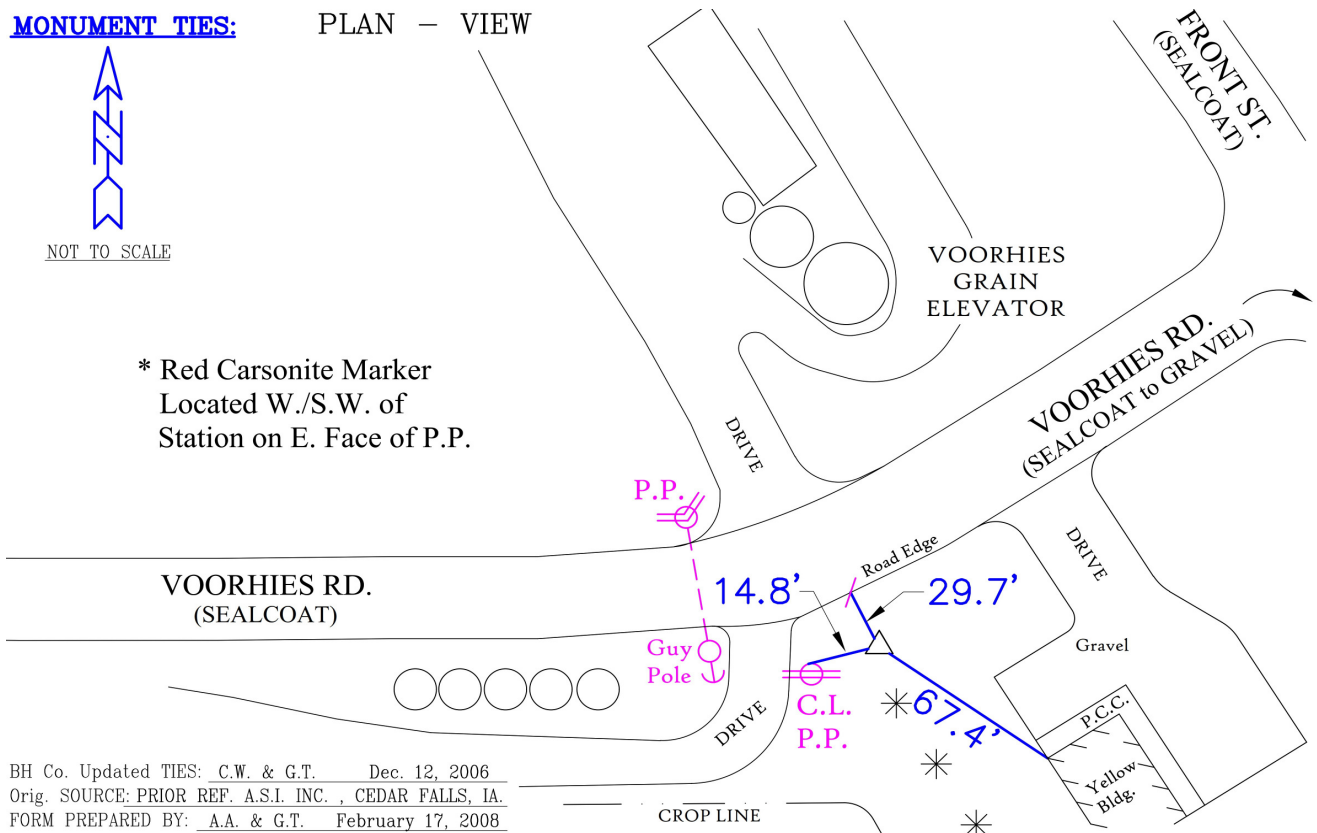
Physical Details: *Station is flush with ground surface located at TBKS.*

NAD 83(NA2011) Latitude: **N42°20'00.56917"** Longitude: **W92°28'56.94085"**
NAVD 88 Ortho Height: **1006.306sft** Ellip. Ht: **902.882sft** **Geoid18(Conus)**

Horizontal Datum: NAD 83(NA2011) - Vertical Datum: NAVD 1988
Iowa North Zone (1401) Northing: **3586231.578sft** Easting: **5196364.990sft**
Mapping Angle: **0°41'23"** Combination Scale Factor: **0.9999191240**

Iowa Regional Coordinate System, Zone 5, Waterloo LCC

IaRCS Zone 5 Northing: **8784732.399sft** Easting: **15437134.569sft**
Mapping Angle: **-0°09'27"** Combination Scale Factor: **1.0000040160**



This document was prepared by Dan Corbin, Inc. for Black Hawk County, Iowa.

7008



Facing West

