

Black Hawk County, Iowa**12/01/2020**

Units: US Survey Feet

Point ID: **7007**Stamping on Disk: **2020-007 Reset**

Type of Monument: *Berntsen 3/4" fluted "Top Security" rod, 6ft long with 2.5" dia. aluminum survey cap, NGS style access cover.*

Physical Details: *Station is 0.1' above ground surface, located 24ft west of the C.L. of Gibson road and approx. 170ft north of the Black Hawk/Tama countyline.*

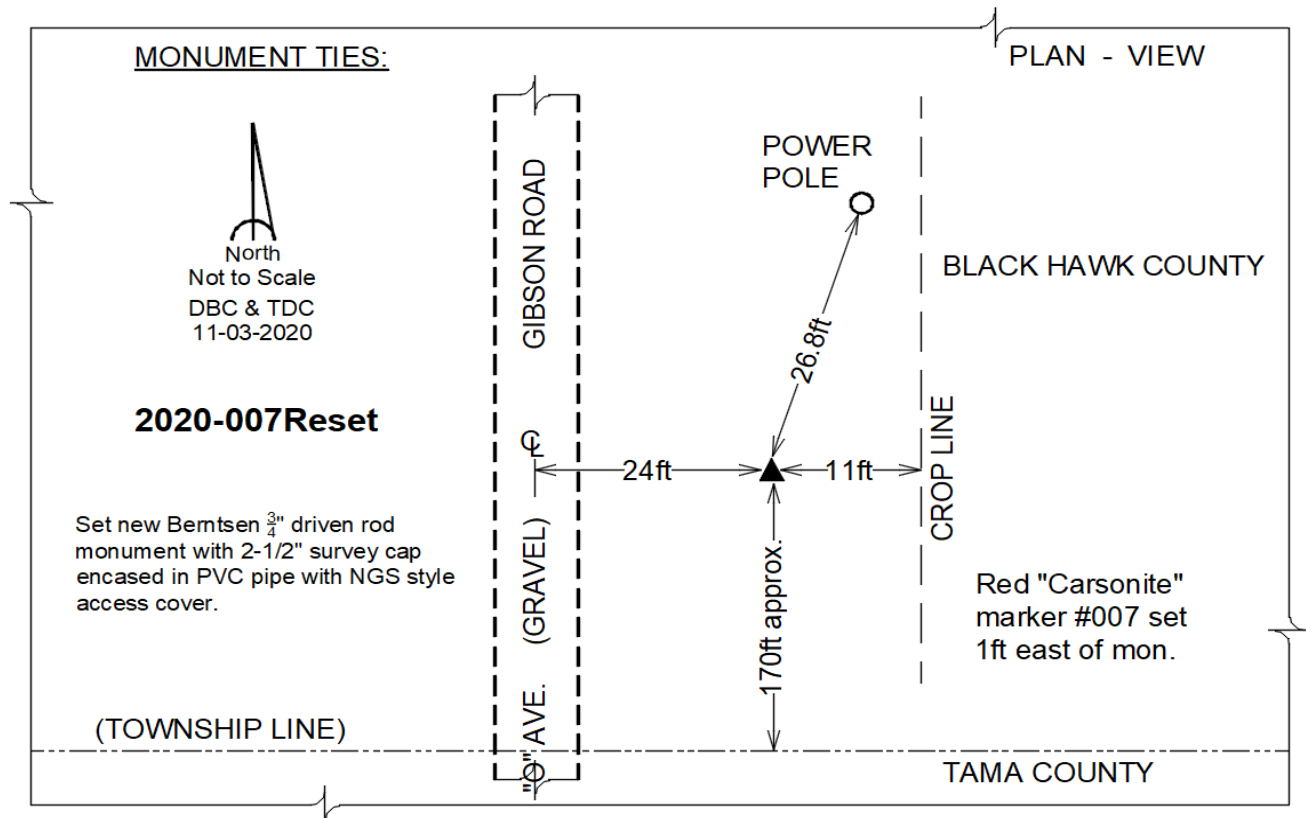
NAD 83(NA2011) Latitude: **N42°17'51.22021"** Longitude: **W92°29'40.46598"**
NAVD 88 Ortho Height: **992.699sft** Ellip. Ht: **889.169sft** **Geoid18(Conus)**

Horizontal Datum: NAD 83(NA2011) - Vertical Datum: NAVD 1988

Iowa North Zone (1401) Northing: **3573099.684sft** Easting: **5193251.900sft**
Mapping Angle: **0°40'53"** Combination Scale Factor: **0.9999236080**

Iowa Regional Coordinate System, Zone 5, Waterloo LCC

IaRCS Zone 5 Northing: **8771646.857sft** Easting: **15433827.389sft**
Mapping Angle: **-0°09'57"** Combination Scale Factor: **1.0000083090**



This document was prepared by Dan Corbin, Inc. for Black Hawk County, Iowa.

7007

Facing South

