

Black Hawk County, Iowa

Units: US Survey Feet

12/01/2020

Point ID: **7006**Stamping on Disk: **94-006**

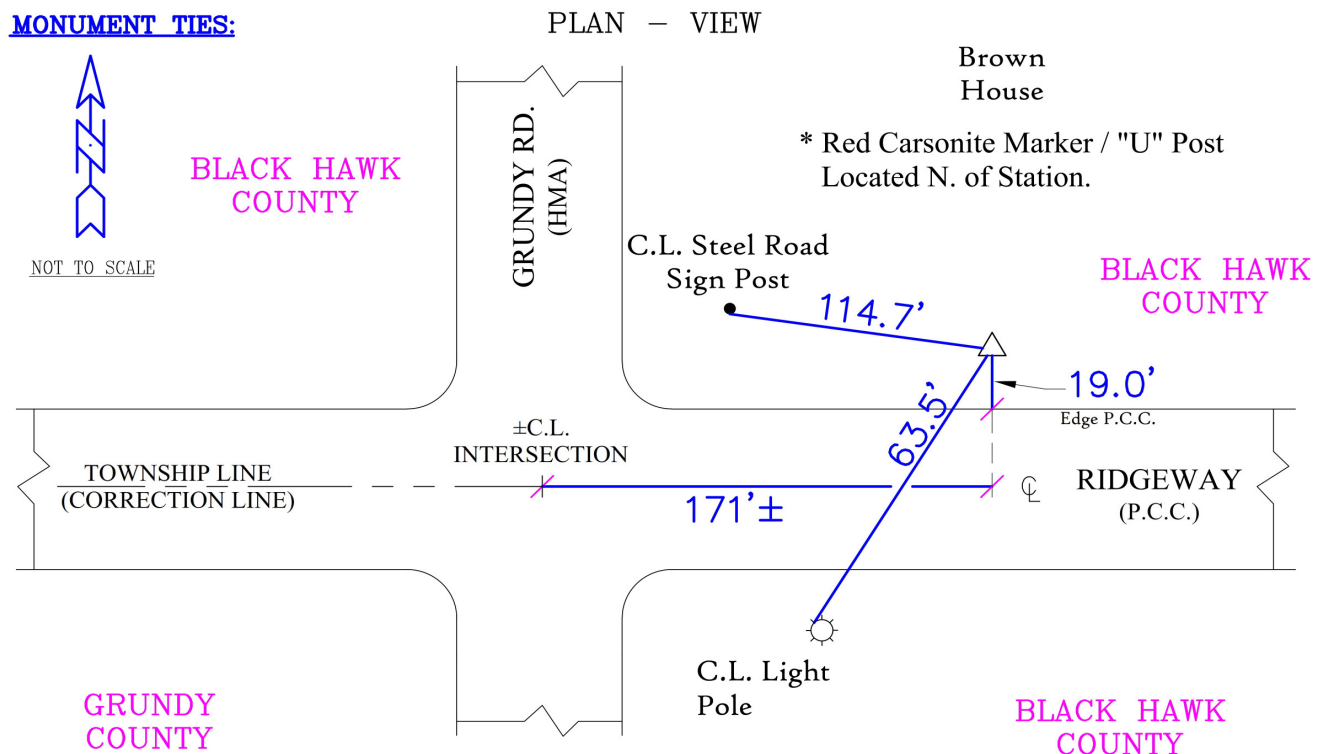
Type of Monument: *Berntsen 5/8" fluted "Top Security" rod, 6ft long with 2.5" dia. aluminum survey cap, NGS style access cover.*

Physical Details: *Station is flush with ground surface located at top of foreslope/shoulder of road.*

NAD 83(NA2011) Latitude: **N42°28'10.89923"** Longitude: **W92°32'00.12282"**
NAVD 88 Ortho Height: **1012.480sft** Ellip. Ht: **908.684sft** **Geoid18(Conus)**

Horizontal Datum: NAD 83(NA2011) - Vertical Datum: NAVD 1988
Iowa North Zone (1401) Northing: **3635702.261sft** Easting: **5182040.150sft**
Mapping Angle: **0°39'18"** Combination Scale Factor: **0.9999078741**

Iowa Regional Coordinate System, Zone 5, Waterloo LCC
IaRCS Zone 5 Northing: **8834413.697sft** Easting: **15423541.537sft**
Mapping Angle: **-0°11'31"** Combination Scale Factor: **0.9999934916**

MONUMENT TIES:

BH Co. Updated TIES: C.W. & G.T. Dec. 11, 2006
Orig. SOURCE: PRIOR REF. A.S.I. INC., CEDAR FALLS, IA.
FORM PREPARED BY: A.A. & G.T. February 17, 2008

This document was prepared by Dan Corbin, Inc. for Black Hawk County, Iowa.

7006



Facing West

