

**Black Hawk County, Iowa**

Units: US Survey Feet

12/01/2020

Point ID: **7004**Stamping on Disk: **94-004**

Type of Monument: *Berntsen 5/8" fluted "Top Security" rod, 6ft long with 2.5" dia. aluminum survey cap, NGS style access cover.*

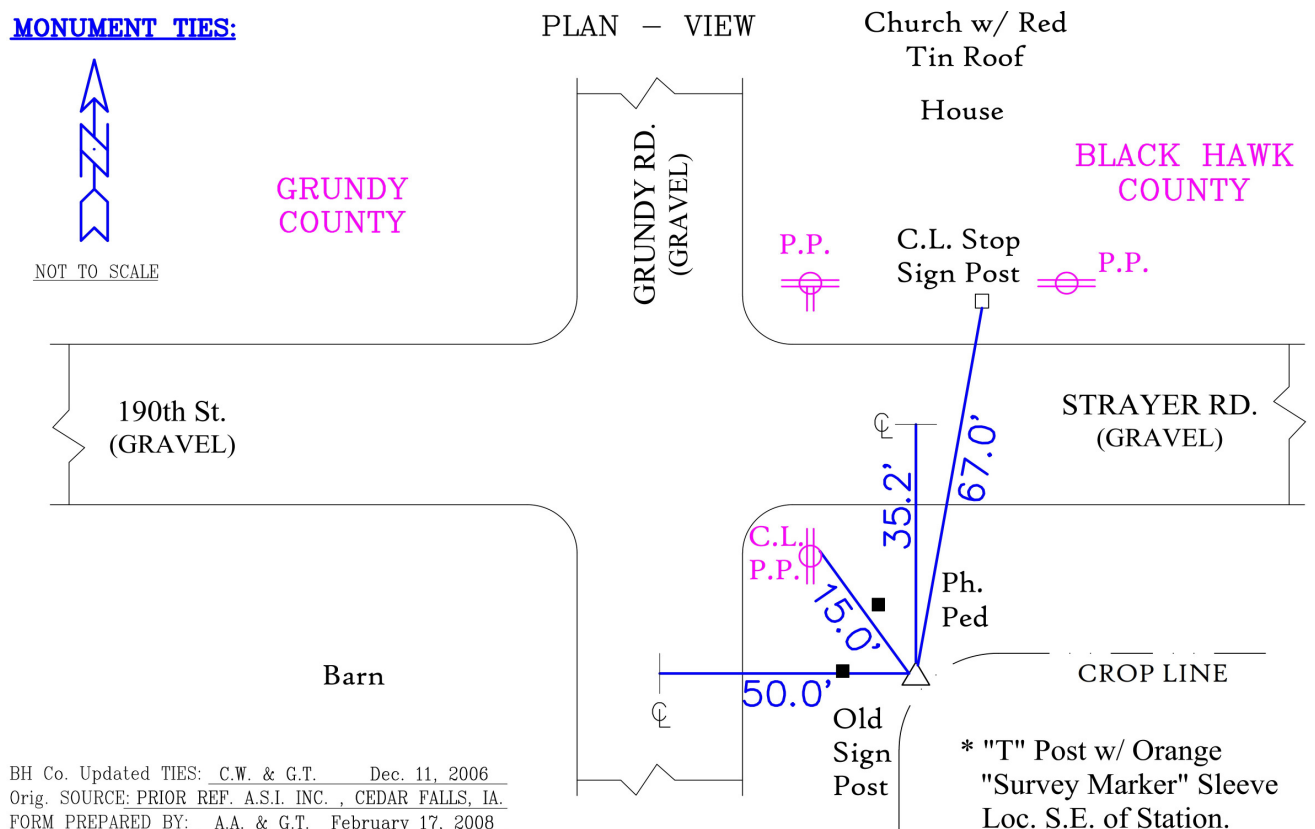
Physical Details: *Station is flush with field corner, located beyond TBKS.*

NAD 83(NA2011) Latitude: **N42°25'39.76074"** Longitude: **W92°32'01.54942"**  
NAVD 88 Ortho Height: **952.524sft** Ellip. Ht: **848.741sft** **Geoid18(Conus)**

Horizontal Datum: NAD 83(NA2011) - Vertical Datum: NAVD 1988  
**Iowa North Zone (1401)** Northing: **3620402.444sft** Easting: **5182108.104sft**  
Mapping Angle: **0°39'18"** Combination Scale Factor: **0.9999135236**

Iowa Regional Coordinate System, Zone 5, Waterloo LCC

**IaRCS Zone 5** Northing: **8819113.240sft** Easting: **15423383.271sft**  
Mapping Angle: **-0°11'32"** Combination Scale Factor: **0.9999989175**

**MONUMENT TIES:**

*This document was prepared by Dan Corbin, Inc. for Black Hawk County, Iowa.*



7004



Facing South

