

Black Hawk County, Iowa

Units: US Survey Feet

12/01/2020

Point ID: **7003**Stamping on Disk: **94-003**

Type of Monument: *Berntsen 5/8" fluted "Top Security" rod, 6ft long with 2.5" dia. aluminum survey cap, NGS style access cover.*

Physical Details: *Station is flush with ground surface located at C.L. of ditch bottom.*

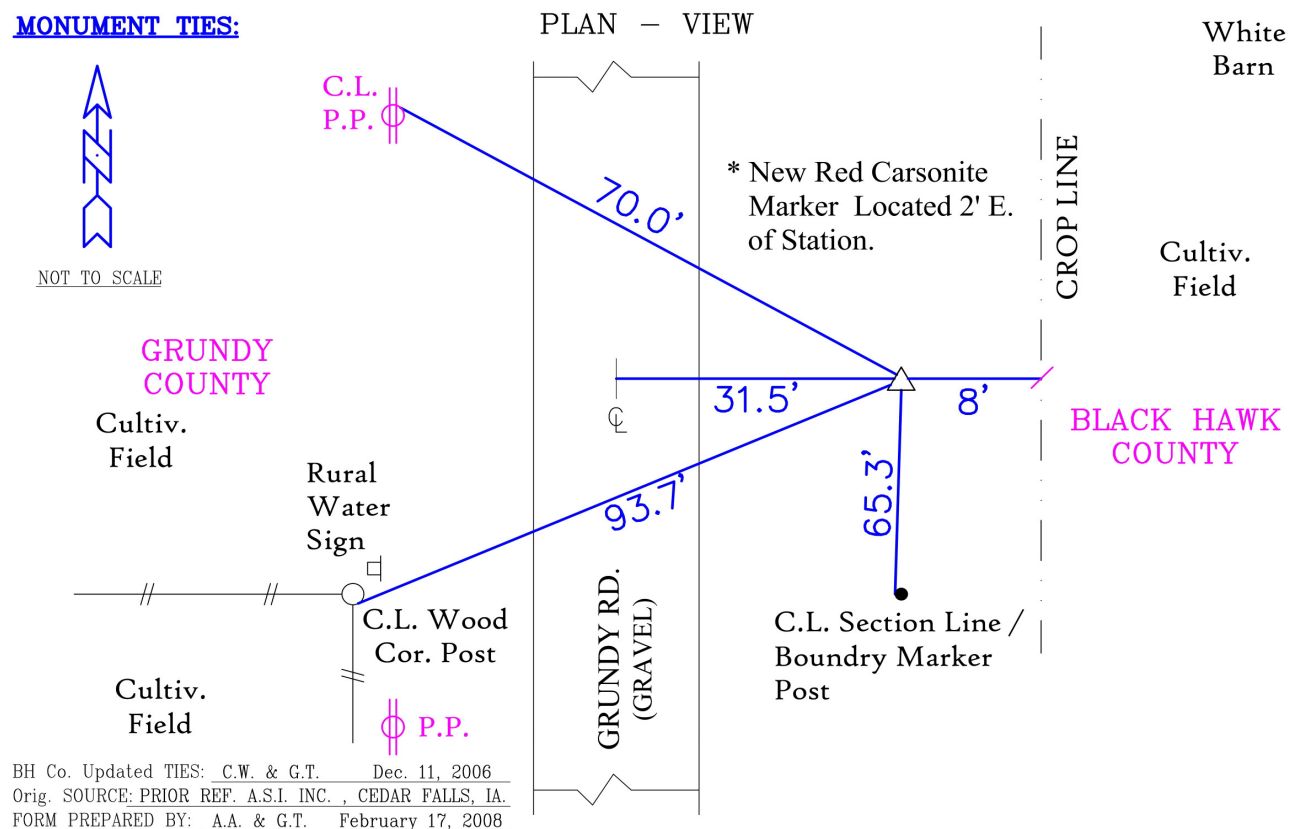
NAD 83(NA2011) Latitude: **N42°23'04.91995"** Longitude: **W92°32'01.46398"**
 NAVD 88 Ortho Height: **907.820sft** Ellip. Ht: **804.039sft** Geoid18(Conus)

Horizontal Datum: NAD 83(NA2011) - Vertical Datum: NAVD 1988

Iowa North Zone (1401) Northing: **3604729.236sft** Easting: **5182293.661sft**
 Mapping Angle: **0°39'18"** Combination Scale Factor: **0.9999190655**

Iowa Regional Coordinate System, Zone 5, Waterloo LCC

IaRCS Zone 5 Northing: **8803437.664sft** Easting: **15423337.084sft**
 Mapping Angle: **-0°11'32"** Combination Scale Factor: **1.0000042304**

MONUMENT TIES:

This document was prepared by Dan Corbin, Inc. for Black Hawk County, Iowa.

7003



Facing East

