

Black Hawk County, Iowa

Units: US Survey Feet

12/01/2020

Point ID: **7002**Stamping on Disk: **94-002**

Type of Monument: *Berntsen 5/8" fluted "Top Security" rod, 6ft long with 2.5" dia. aluminum survey cap, NGS style access cover.*

Physical Details: *Station is located in south 1/4 of field entrance, flush with ground surface.*

NAD 83(NA2011) Latitude: **N42°20'29.98593"** Longitude: **W92°32'01.58250"**
NAVD 88 Ortho Height: **980.044sft** Ellip. Ht: **876.271sft** Geoid18(Conus)

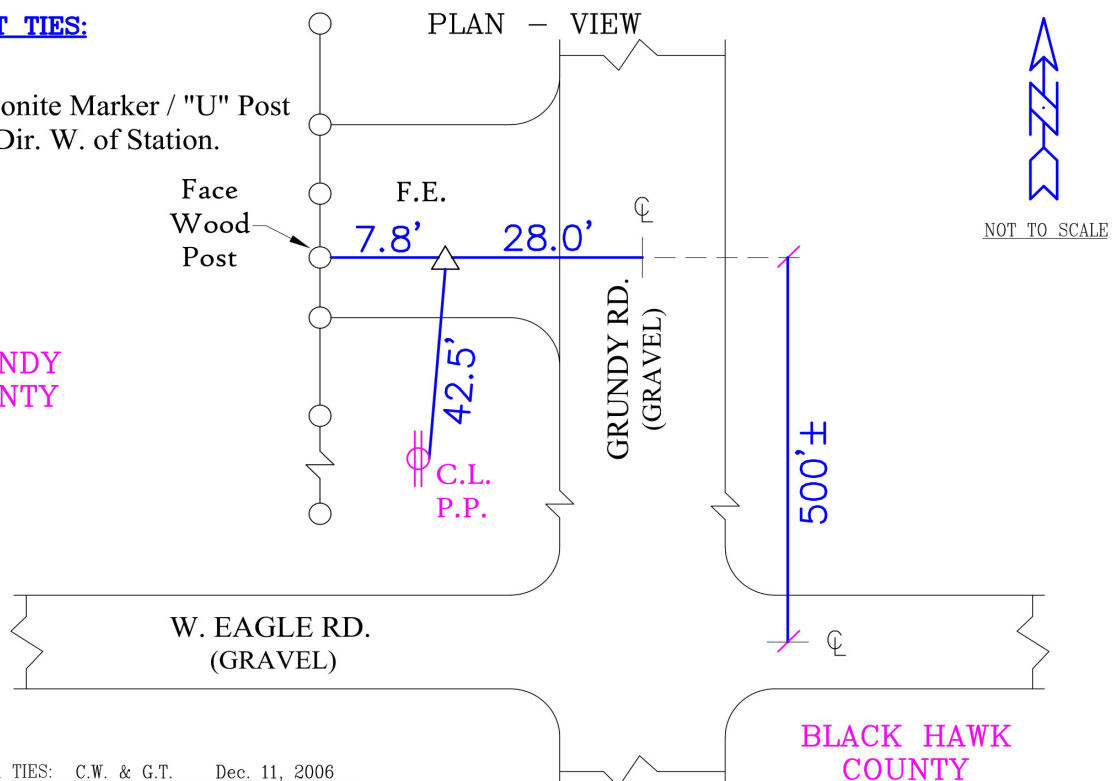
Horizontal Datum: NAD 83(NA2011) - Vertical Datum: NAVD 1988
Iowa North Zone (1401) Northing: **3589046.476sft** Easting: **5182464.018sft**
Mapping Angle: **0°39'17"** Combination Scale Factor: **0.9999195796**

Iowa Regional Coordinate System, Zone 5, Waterloo LCC

IaRCS Zone 5 Northing: **8787752.765sft** Easting: **15423275.556sft**
Mapping Angle: **-0°11'32"** Combination Scale Factor: **1.0000045152**

MONUMENT TIES:

* Red Carsonite Marker / "U" Post
Located Dir. W. of Station.

GRUNDY COUNTY

BH Co. Updated TIES: C.W. & G.T. Dec. 11, 2006
Orig. SOURCE: PRIOR REF. A.S.I. INC., CEDAR FALLS, IA.
FORM PREPARED BY: A.A. & G.T. February 11, 2008

This document was prepared by Dan Corbin, Inc. for Black Hawk County, Iowa.

7002



Facing West

