

Black Hawk County, Iowa**12/01/2020**

Units: US Survey Feet

Point ID: **7001**Stamping on Disk: **No. 904**

Type of Monument: *Std. USC&GS monument, 4"x4" concrete w/brass cap. Per USGSQuad mapping w/ record elev. not published.*

Physical Details: *Station is 0.80' above ground surface, located SE of corner post at top of backslope in NW corner gravel road intersection (at SW corner of BHC)*

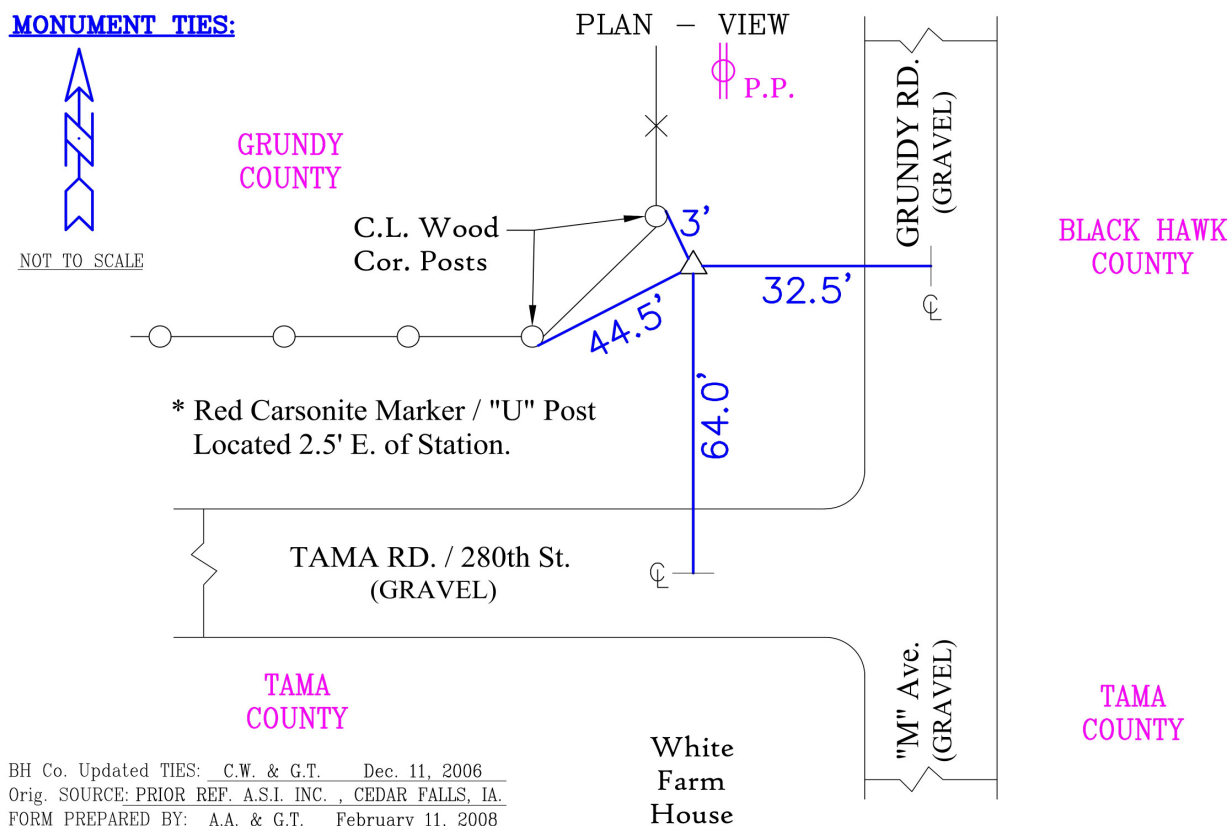
NAD 83(NA2011) Latitude: **N42°17'49.85140"** Longitude: **W92°32'01.00279"**
NAVD 88 Ortho Height: **1015.786sft** Ellip. Ht: **912.008sft** **Geoid18(Conus)**

Horizontal Datum: NAD 83(NA2011) - Vertical Datum: NAVD 1988

Iowa North Zone (1401) Northing: **3572837.966sft** Easting: **5182692.848sft**
Mapping Angle: **0°39'18"** Combination Scale Factor: **0.9999225589**

Iowa Regional Coordinate System, Zone 5, Waterloo LCC

IaRCS Zone 5 Northing: **8771541.269sft** Easting: **15423264.727sft**
Mapping Angle: **-0°11'32"** Combination Scale Factor: **1.0000072578**

MONUMENT TIES:

This document was prepared by Dan Corbin, Inc. for Black Hawk County, Iowa.

7001



Facing West

