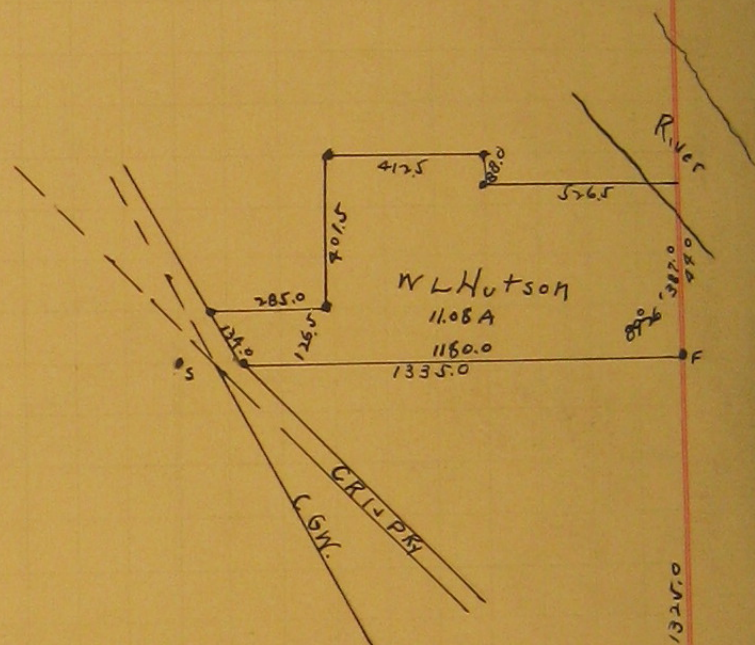


A hand-drawn sketch map on a piece of paper. It shows two vertical lines representing bayous. The left line is labeled 'Old Bayou' and has a dot on it with '406'' written next to it. The right line is labeled 'Present Bayou' and has two 'x' marks on it. Between the two lines, the text 'Gram + Haroum' is written. At the top, 'Blaze Tree' is written with an 'x' mark next to it. The number '146'' is also written near the top right.

Set 2 points on approx line
on islands in Bayou



1-41 + 2-11 + 39

The _____ of Section 12, Township 89, Range 14, West
5th P. M., Iowa, was surveyed by me on the _____ day of _____, 1909, at request of P. Gram,
_____ were chainmen duly
approved and sworn by me on the _____ day of _____, 1_____, and the above is a true and correct plat and field
notes of the said survey. Nathan B. Barber County Surveyor.